

NewTom RX DC VET Wired ACCURATE.VISION

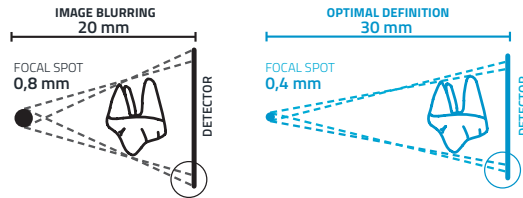
X-RAY IMAGING THAT IS PRECISE, PRACTICAL AND VERSATILE



Cone Beam 3D Imaging
NewTom VET 
what's next

HIGHER PERFORMANCE AND MAXIMUM ERGONOMICS

Thanks to the protractor with graduated scale, arm and tube head positioning is stable, effective and just right for the task. Featuring an integrated self-balancing device, allowing them to be pointed in 6 directions, the arms are available in the following lengths: 40, 60 and 90 cm, making installation as simple as possible.



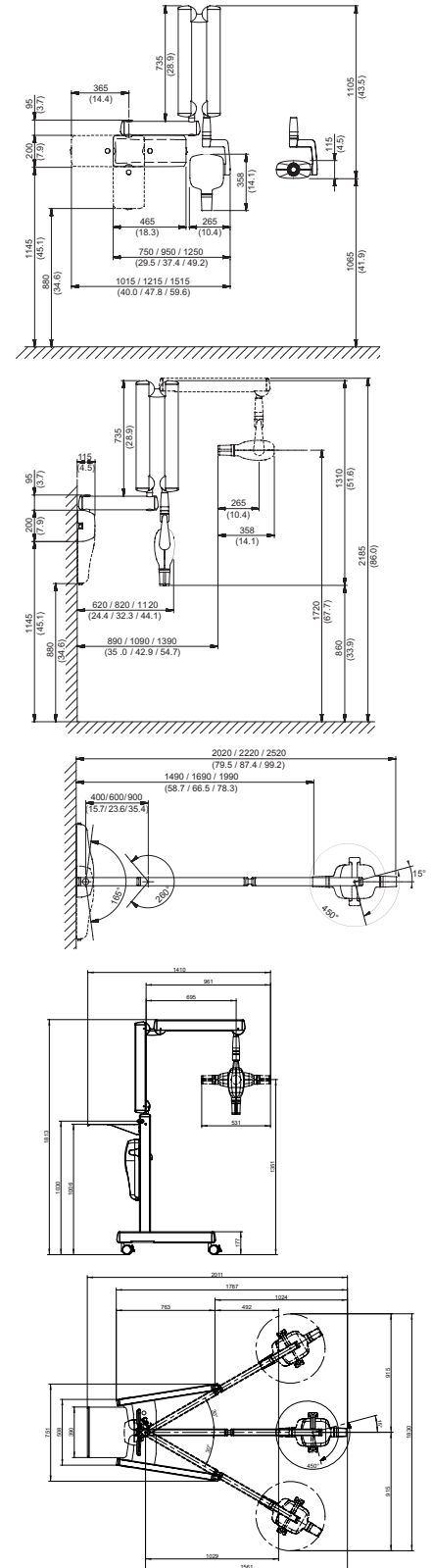
Increased X-ray parallelism and an incorporated collimator allow the RX DC VET to achieve a source-to-skin distance of 30 cm. The RX DC VET provides pin-sharp, precise images with outstanding detail.



USER-FRIENDLY CONTROL

A practical, user-friendly handheld unit, designed for immediate, precise X-ray image acquisition, allows easy selection of the most suitable programme. Moreover, it allows users to control the exact emitted dose and the tube temperature via the sequential exposure graph.

SIMPLE INSTALLATION, VERSATILITY, RELIABILITY



| RX DC VET X-ray unit | |
|-----------------------------------|---|
| Generator | Constant potential, microprocessor-controlled |
| Working frequency | 145 ÷ 230 KHz with self-adjustment (typically 175 KHz) |
| Focal spot | 0.4 mm (IEC 336) |
| Total filtration | 2 mm @ 60 kV / 2 mm @ 65 kV / 2 mm @ 70 kV (*) |
| Anode current | 4 / 8 mA |
| Voltage at X-ray tube | 60 / 65 / 70 kV (*) |
| Exposure times | 0.020 – 1.000 seconds, R'10 and R'20 scale |
| Source-skin distance | 20 and 30 cm |
| Irradiated field | Ø 60 mm and Ø 55 mm (with round cone) |
| Additional collimators (optional) | 35 x 45 mm (with rectangular cone for size 2 sensors) 31 x 41 mm and 22 x 35 mm, for size 1 and size 0 sensors |
| Power supply | 50/60 Hz, 115- 120Vac ±10% or 230-240Vac ±10% |
| Duty Cycle | Continuous operation with self-adjustment up to 1s/90s total |
| Arms (for Standard version only) | Available in 3 lengths: 40 cm – 60 cm – 90 cm |
| Max. arm extension | 230 cm, from wall |
| Versions | Standard (wall mounted) or Mobile (on portable cart) |



(*) values depend on the country where the product is marketed

BU Medical Equipment

Sede legale ed amministrativa
 Headquarters

CEFLA s.c.
 Via Selice Provinciale 23/a ■ 40026 Imola ■ Italy
 t. +39 045 8202727 ■ 045 583500
 info@newtom.it

Stabilimento
 Plant

Via Bicocca, 14/c
 40026 Imola ■ Bo (Italy)
 tel. +39 0542 653441
 fax +39 0542 653601

newtom.it

