



CLINICAL CABINETRY CATALOG



TABLE OF CONTENTS

<u>Anthos Perfetta Clinical Cabinetry</u>	4 - 17
<u>Anthos Linea Clinical Cabinetry</u>	18 - 47
<u>Anthos Sterilization Cabinetry</u>	48 - 50
<u>Finish Options</u>	51 - 52



ANTHOS PERFETTA CLINICAL CABINETRY



ANTHOS PERFETTA INTEGRATED TREATMENT CONSOLE

Vendor Item #: APITC 411-412-000
PDCP SAP #: 101707819
Description: Rear TX Console, All drawers to the sides
MSRP: \$13,120
Console Dimensions:

Width: 43.0"
Height: 81.6"
Depth: 19.9"

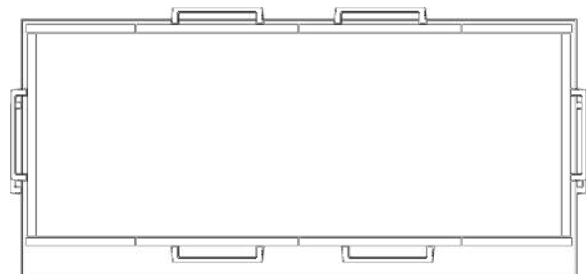
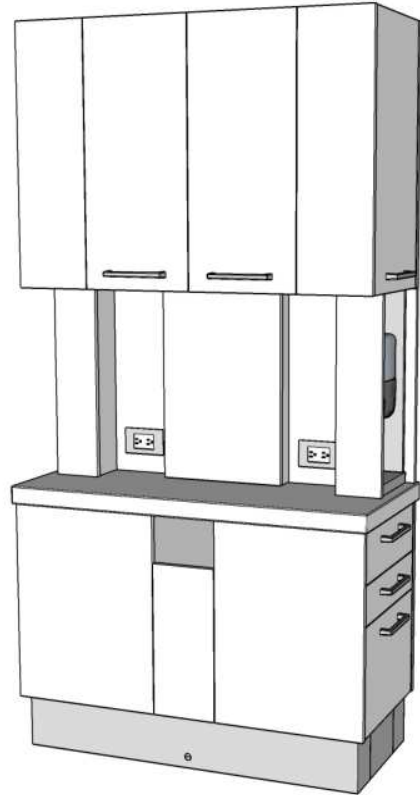
For all dimensions please see the respective installation guide

Standard Features Includes:

- ❑ Structural steel powder coated base with built in levelers
- ❑ Installed free-standing or flush to wall
- ❑ Pass through upper consoles with three cantilevered shelves
- ❑ Easy access upper storage for CPU and water bottle
- ❑ Soft close drawers with concealed glides
- ❑ Soft close concealed hinge doors
- ❑ Premium embossed laminate fronts and doors
- ❑ Two inch thick designer solid surface work surface
- ❑ Fully chaised for future equipment integration
- ❑ Two hospital grade duplex
- ❑ Task Lighting
- ❑ Two built in sanitizer chaises with sanitized holder
- ❑ Two PPE drawers
- ❑ Two small equipment drawers

Easily Integrated Equipment:

- ❑ APITC MM1 - Track-mounted monitor arm
SAP #: 101707823 MSRP: \$1,195
-
- ❑ APITC 4Z - Cefla floating work surface with plate
SAP #: 101707833 MSRP: \$1,290



All Anthos Perfetta and Anthos Linea Dental Cabinet Systems
are available to the Patterson design team in
2D version for floor planning necessities
AND
3D version for digital walk through presentations



ANTHOS PERFETTA INTEGRATED TREATMENT CONSOLE

Vendor Item #: APITC 413-412-000
PDCP SAP #: 101707820
Description: Rear TX Console, Left side drawers to front, Right side drawers to side
MSRP: \$13,120

Console Dimensions:

Width: 43.0"
Height: 81.6"
Depth: 19.9"

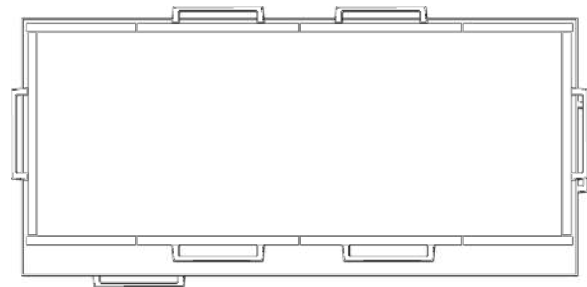
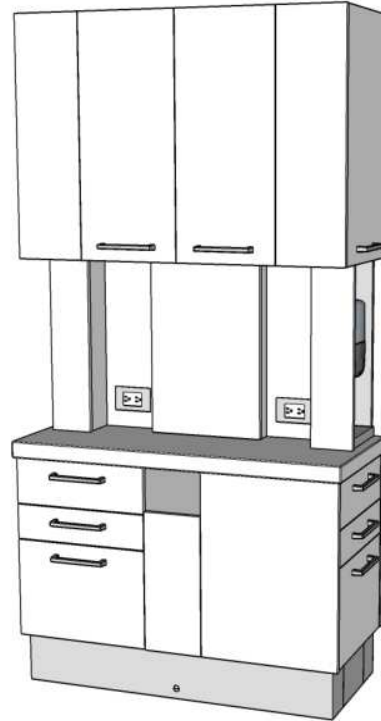
For all dimensions please see the respective installation guide

Standard Features Includes:

- ❑ Structural steel powder coated base with built in levelers
- ❑ Installed free-standing or flush to wall
- ❑ Pass through upper consoles with three cantilevered shelves
- ❑ Easy access upper storage for CPU and water bottle
- ❑ Soft close drawers with concealed glides
- ❑ Soft close concealed hinge doors
- ❑ Premium embossed laminate fronts and doors
- ❑ Two inch thick designer solid surface work surface
- ❑ Fully chaised for future equipment integration
- ❑ Two hospital grade duplex
- ❑ Task Lighting
- ❑ Two built in sanitizer chaises with sanitized holder
- ❑ Two PPE drawers
- ❑ Two small equipment drawers

Easily Integrated Equipment:

- ❑ APITC MM1 - Track-mounted monitor arm
SAP #: 101707823 MSRP: \$1,195
-
- ❑ APITC 4Z - Cefla floating work surface with plate
SAP #: 101707833 MSRP: \$1,290



All Anthos Perfetta and Anthos Linea Dental Cabinet Systems are available to the Patterson design team in 2D version for floor planning necessities AND 3D version for digital walk through presentations



ANTHOS PERFETTA INTEGRATED TREATMENT CONSOLE

Vendor Item #: APITC 411-413-000
PDCP SAP #: 101707821
Description: Rear TX Console, Left side drawers to side, Right side drawers to front
MSRP: \$13,120

Console Dimensions:

Width: 43.0"
Height: 81.6"
Depth: 19.9"

For all dimensions please see the respective installation guide

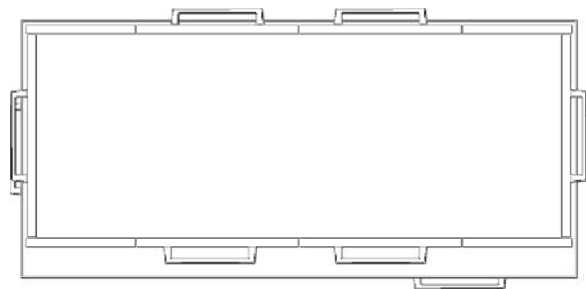
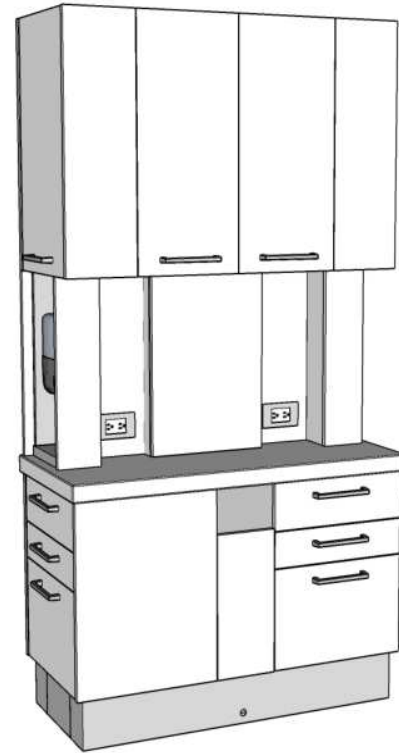
Standard Features Includes:

- ❑ Structural steel powder coated base with built in levelers
- ❑ Installed free-standing or flush to wall
- ❑ Pass through upper consoles with three cantilevered shelves
- ❑ Easy access upper storage for CPU and water bottle
- ❑ Soft close drawers with concealed glides
- ❑ Soft close concealed hinge doors
- ❑ Premium embossed laminate fronts and doors
- ❑ Two inch thick designer solid surface work surface
- ❑ Fully chaised for future equipment integration
- ❑ Two hospital grade duplex
- ❑ Task Lighting
- ❑ Two built in sanitizer chaises with sanitized holder
- ❑ Two PPE drawers
- ❑ Two small equipment drawers

Easily Integrated Equipment:

- ❑ APITC MM1 - Track-mounted monitor arm
SAP #: 101707823 MSRP: \$1,195

- ❑ APITC 4Z - Cefla floating work surface with plate
SAP #: 101707833 MSRP: \$1,290



All Anthos Perfetta and Anthos Linea Dental Cabinet Systems are available to the Patterson design team in 2D version for floor planning necessities AND 3D version for digital walk through presentations



ANTHOS PERFETTA INTEGRATED TREATMENT CONSOLE

Vendor Item #: APITC 413-413-000
PDCP SAP #: 101707822
Description: Rear TX Console, All drawers to front

MSRP: \$13,120

Console Dimensions:

Width: 43.0"

Height: 81.6"

Depth: 19.9"

For all dimensions please see the respective installation guide

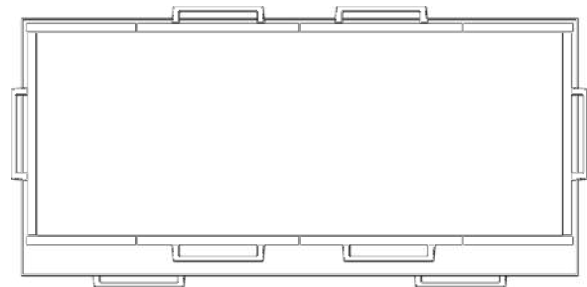
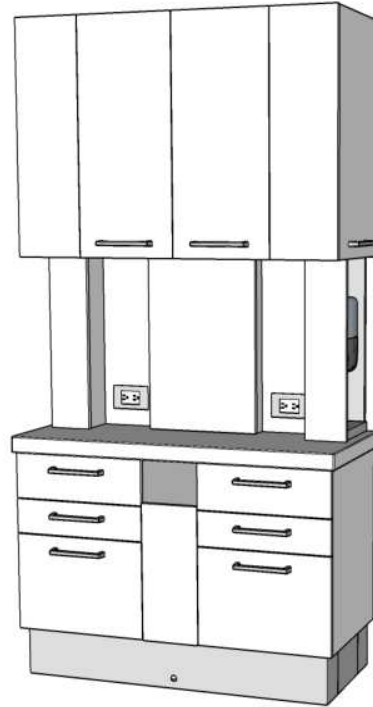
Standard Features Includes:

- ❑ Structural steel powder coated base with built in levelers
- ❑ Installed free-standing or flush to wall
- ❑ Pass through upper consoles with three cantilevered shelves
- ❑ Easy access upper storage for CPU and water bottle
- ❑ Soft close drawers with concealed glides
- ❑ Soft close concealed hinge doors
- ❑ Premium embossed laminate fronts and doors
- ❑ Two inch thick designer solid surface work surface
- ❑ Fully chaised for future equipment integration
- ❑ Two hospital grade duplex
- ❑ Task Lighting
- ❑ Two built in sanitizer chaises with sanitized holder
- ❑ Two PPE drawers
- ❑ Two small equipment drawers

Easily Integrated Equipment:

- ❑ APITC MM1 - Track-mounted monitor arm
SAP #: 101707823 MSRP: \$1,195

- ❑ APITC 4Z - Cefla floating work surface with plate
SAP #: 101707833 MSRP: \$1,290



All Anthos Perfetta and Anthos Linea Dental Cabinet Systems
are available to the Patterson design team in
2D version for floor planning necessities
AND
3D version for digital walk through presentations



ANTHOS PERFETTA GLIDING MONITOR MOUNT

Vendor Item #: APITC MM1
PDCP SAP #: 101707823
Description: Linea Gliding Monitor Mount for Rear Treatment Console

MSRP: \$1,195

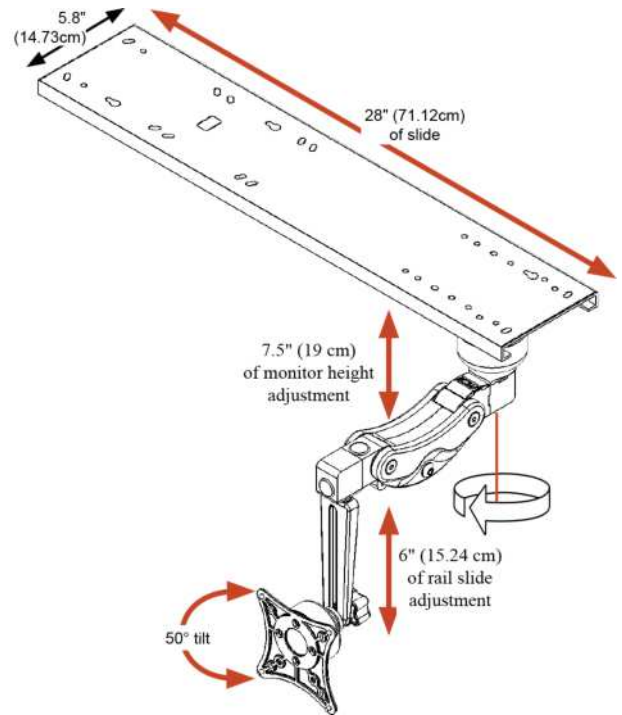
Console Dimensions:

Width: 28"
Depth: 5.8"

For all dimensions please see the respective installation guide

Standard Features Includes:

- ❑ Accomodates monitors up to 18 lbs
- ❑ Effortless stowability and tilt
- ❑ Organizes cables
- ❑ 28" (71.12 cm) of horizontal slide

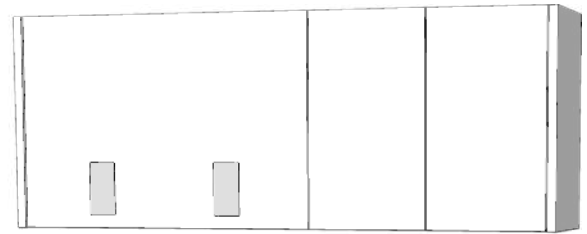


All Anthos Perfetta and Anthos Linea Dental Cabinet Systems are available to the Patterson design team in 2D version for floor planning necessities AND 3D version for digital walk through presentations



ANTHOS PERFETTA SIDE TREATMENT CONSOLE

Vendor Item #: APSTC B81-H00-U91
PDCP SAP #: 101707824
Description: Side Turnover Station, Sink Left
MSRP: \$8,180



Console Dimensions:

Width: 42.5"

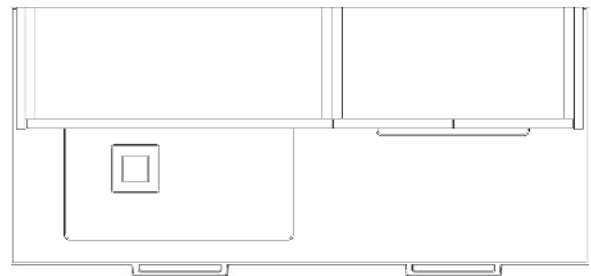
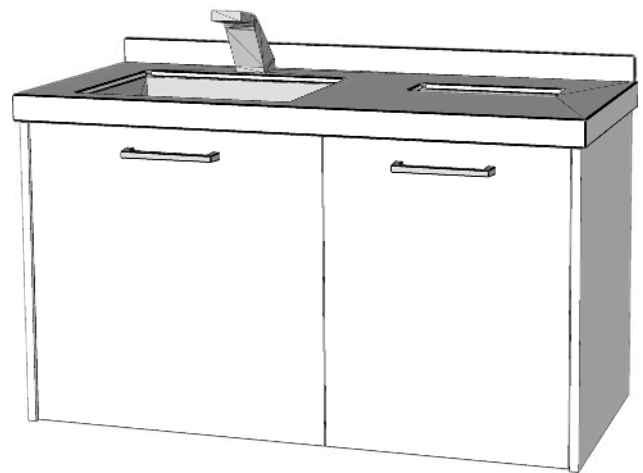
Height: 66.3"

Depth: 18.9"

For all dimensions please see the respective installation guide

Standard Features Includes:

- ✘ Left base cabinet (311)
Sink base with designer undermount stainless steel sink and hands free Perfetta faucet
- ✘ Left wall cabinet (361)
Enclosed hands free soap dispenser and towel dispenser
- ✘ Right base cabinet (323)
Waste drop through counter / Pull out turn over station for waste, bio hazards, and sharps
- ✘ Right wall cabinet (373)
Storage for treatment room turnover supplies



All Anthos Perfetta and Anthos Linea Dental Cabinet Systems
are available to the Patterson design team in
2D version for floor planning necessities
AND
3D version for digital walk through presentations



ANTHOS PERFETTA SIDE TREATMENT CONSOLE

Vendor Item #: APSTC B82-H00-U92
PDCP SAP #: 101707825
Description: Side Turnover Station, Sink Right
MSRP: \$8,180

Console Dimensions:

Width: 42.5"

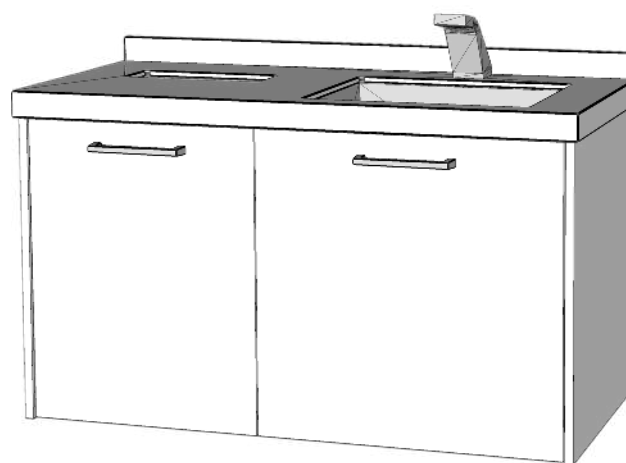
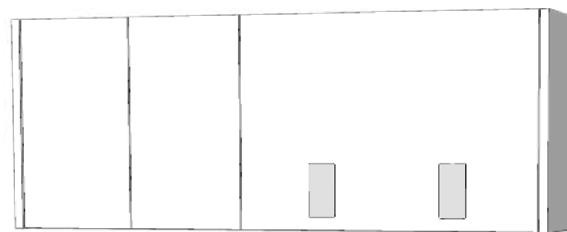
Height: 66.3"

Depth: 18.9"

For all dimensions please see the respective installation guide

Standard Features Includes:

- ✘ Left base cabinet (323)
Waste drop through counter / Pull out turn over station for waste, bio hazards, and sharps
- ✘ Left wall cabinet (373)
Storage for treatment room turnover supplies
- ✘ Right base cabinet (311)
Sink base with designer undermount stainless steel sink and hands free Perfetta faucet
- ✘ Right wall cabinet (361)
Enclosed hands free soap dispenser and towel dispenser



All Anthos Perfetta and Anthos Linea Dental Cabinet Systems
are available to the Patterson design team in
2D version for floor planning necessities
AND
3D version for digital walk through presentations



ANTHOS PERFETTA SIDE TREATMENT CONSOLE

Vendor Item #: APSTC B83-H00-U93
PDCP SAP #: 101707826
Description: Side Turnover Station, Sink Left,
Drawer Right
MSRP: \$10,780

Console Dimensions:

Width: 60.3"

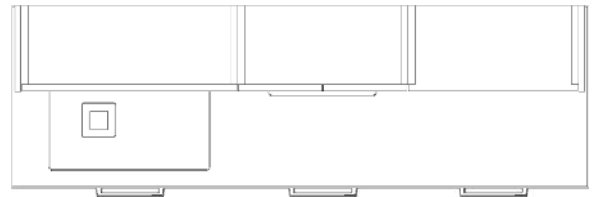
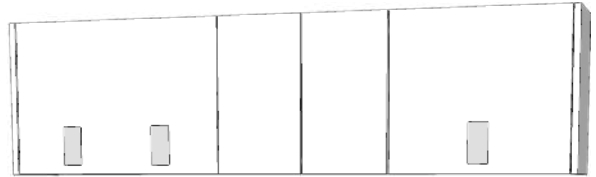
Height: 66.3"

Depth: 18.9"

For all dimensions please see the respective installation guide

Standard Features Includes:

- ✘ Left base cabinet (311)
Sink base with designer undermount stainless steel sink and hands-free Perfetta faucet
- ✘ Left wall cabinet (361)
Enclosed hands-free soap dispenser and towel dispenser
- ✘ Middle base cabinet (323)
Waste drop through counter / Pull out turn over station for waste, bio hazards, and sharps
- ✘ Middle wall cabinet (373)
Storage for treatment room turnover supplies
- ✘ Right base cabinet (325)
Three drawer base / top drawer for PPE
- ✘ Right wall cabinet (375)
Dispensing cabinet for sanitizer



All Anthos Perfetta and Anthos Linea Dental Cabinet Systems
are available to the Patterson design team in
2D version for floor planning necessities
AND
3D version for digital walk through presentations



ANTHOS PERFETTA SIDE TREATMENT CONSOLE

Vendor Item #: APSTC B84-H00-U94
PDCP SAP #: 101707827
Description: Side Turnover Station, Drawers Left,
Sink Right
MSRP: \$10,780
Console Dimensions:

Width: 60.3"

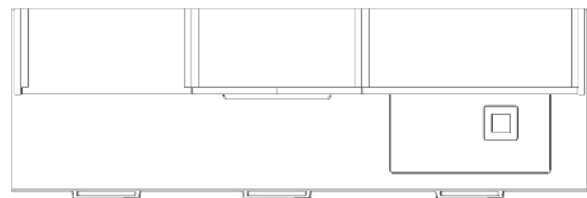
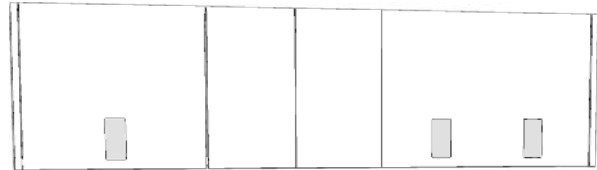
Height: 66.3"

Depth: 18.9"

For all dimensions please see the respective installation guide

Standard Features Includes:

- ✘ Left base cabinet (325)
Three drawer base / top drawer for PPE
- ✘ Left wall cabinet (375)
Dispensing cabinet for sanitizer
- ✘ Middle base cabinet (323)
Waste drop through counter / Pull out turn over
station for waste, bio hazards, and sharps
- ✘ Middle wall cabinet (373)
Storage for treatment room turnover supplies
- ✘ Right base cabinet (311)
Sink base with designer undermount stainless steel
sink and hands free Perfetta faucet
- ✘ Right wall cabinet (361)
Enclosed hands free soap dispenser and towel
dispenser

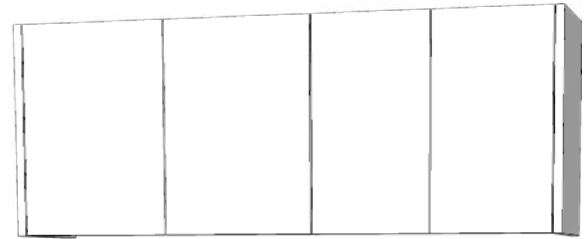


All Anthos Perfetta and Anthos Linea Dental Cabinet Systems
are available to the Patterson design team in
2D version for floor planning necessities
AND
3D version for digital walk through presentations



ANTHOS PERFETTA SIDE TREATMENT CONSOLE

Vendor Item #: APSTC B85-H00-U95
PDCP SAP #: 101707828
Description: Side TX Console - Storage
MSRP: \$8,810



Console Dimensions:

Width: 42.5"

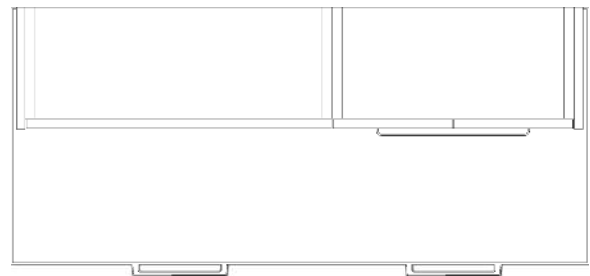
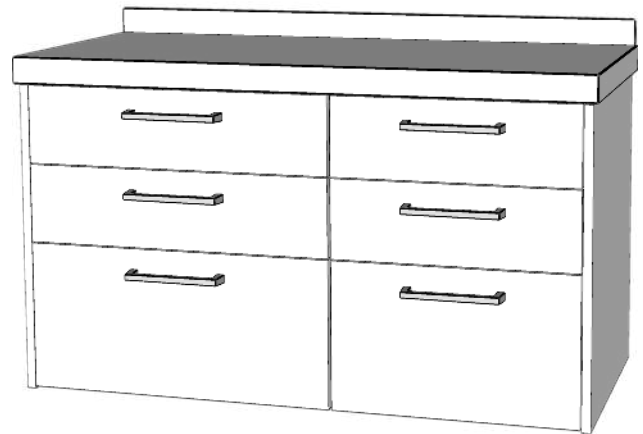
Height: 66.3"

Depth: 18.9"

For all dimensions please see the respective installation guide

Standard Features Includes:

- ✘ Left base cabinet (313)
Three drawer base cabinet
- ✘ Left wall cabinet (363)
Storage cabinet
- ✘ Right base cabinet (325)
Three drawer base cabinet / top drawer for PPE
- ✘ Right wall cabinet (373)
Storage cabinet

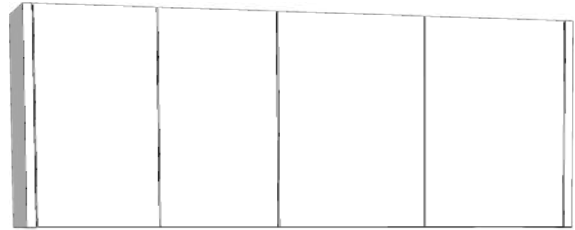


All Anthos Perfetta and Anthos Linea Dental Cabinet Systems
are available to the Patterson design team in
2D version for floor planning necessities
AND
3D version for digital walk through presentations



ANTHOS PERFETTA SIDE TREATMENT CONSOLE

Vendor Item #: APSTC B86-H00-U96
PDCP SAP #: 101707829
Description: Side TX Console - Storage
MSRP: \$8,810



Console Dimensions:

Width: 42.5"

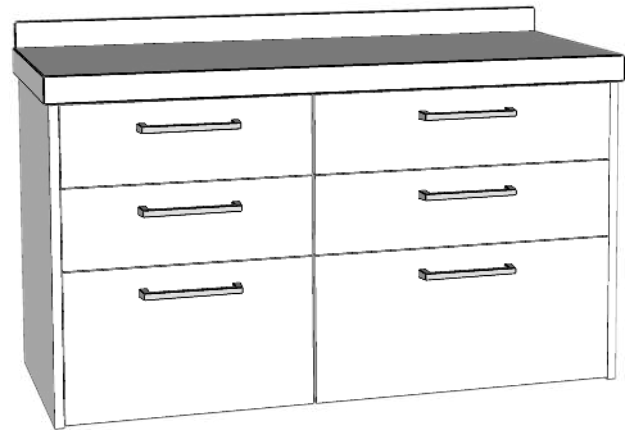
Height: 66.3"

Depth: 18.9"

For all dimensions please see the respective installation guide

Standard Features Includes:

- ✘ Left base cabinet (325)
Three drawer base cabinet / top drawer for PPE
- ✘ Left wall cabinet (373)
Storage cabinet
- ✘ Right base cabinet (313)
Three drawer base cabinet
- ✘ Right wall cabinet (363)
Storage cabinet



All Anthos Perfetta and Anthos Linea Dental Cabinet Systems
are available to the Patterson design team in
2D version for floor planning necessities
AND
3D version for digital walk through presentations



ANTHOS PERFETTA CENTER TREATMENT CONSOLE

Vendor Item #: APCTC 511-521-000
PDCP SAP #: 101707830
Description: Central Island Treatment Console

MSRP: \$33,955

Console Dimensions:

Width: 22.7"

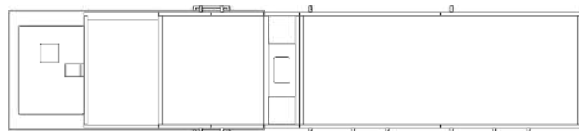
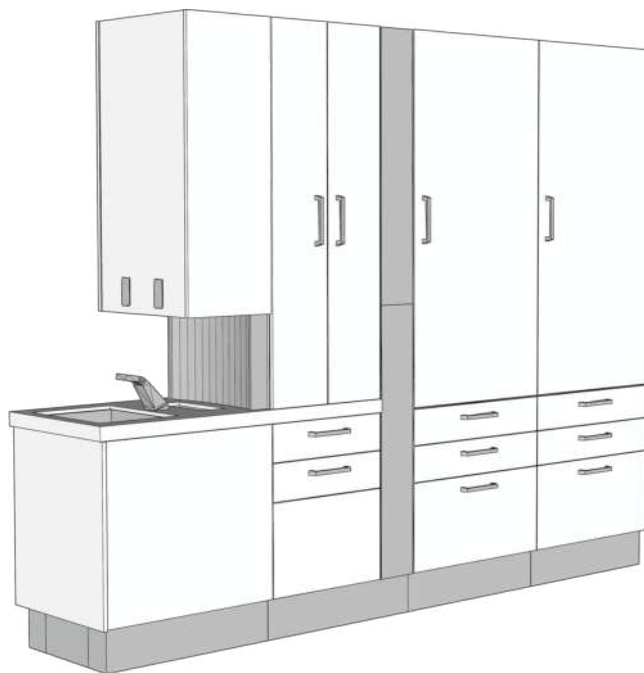
Height: 87.5"

Depth: 110.0"

For all dimensions please see the respective installation guide

Standard Features Includes:

- ✘ Structural steel powder coated base with built in levelers
- ✘ Premium embossed laminate fronts and doors
- ✘ Soft close drawers with concealed glides
- ✘ Soft close concealed hinge doors
- ✘ Two inch thick designer solid surface work surface
- ✘ Designer under mount stainless steel sink
- ✘ Hands free Perfetta faucet
- ✘ Through counter waste
- ✘ Hands free soap dispensing
- ✘ Towel dispensing
- ✘ Pass through hutch storage
- ✘ Bi-Fold X-Ray storage



All Anthos Perfetta and Anthos Linea Dental Cabinet Systems
are available to the Patterson design team in
2D version for floor planning necessities
AND
3D version for digital walk through presentations



ANTHOS PERFETTA CENTER TREATMENT CONSOLE

Vendor Item #: APCTC 511-000-000
PDCP SAP #: 101707831
Description: T-Wall Treatment Console- Storage
MSRP: \$23,800

Console Dimensions:

Width: 22.7"

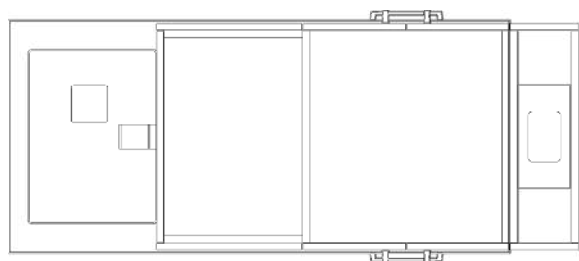
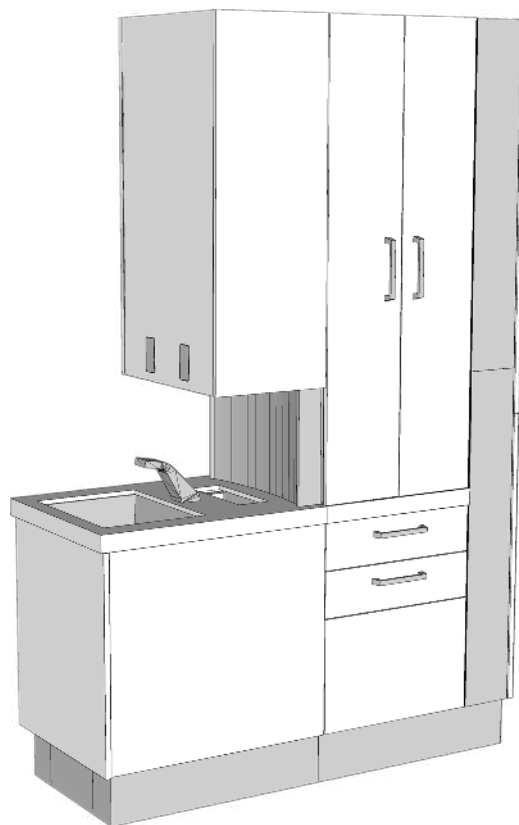
Height: 87.5"

Depth: 56.2"

For all dimensions please see the respective installation guide

Standard Features Includes:

- ❑ Structural steel powder coated base with built in levelers
- ❑ Premium embossed laminate fronts and doors
- ❑ Soft close drawers with concealed glides
- ❑ Soft close concealed hinge doors
- ❑ Two inch thick designer solid surface work surface
- ❑ Designer under mount stainless steel sink
- ❑ Hands free Perfetta faucet
- ❑ Through counter waste
- ❑ Hands free soap dispensing
- ❑ Towel dispensing
- ❑ Pass through hutch storage



All Anthos Perfetta and Anthos Linea Dental Cabinet Systems
are available to the Patterson design team in
2D version for floor planning necessities
AND
3D version for digital walk through presentations



ANTHOS PERFETTA CENTER TREATMENT CONSOLE

Vendor Item #: APCTC 501-000-000
PDCP SAP #: 101707832
Description: T-Wall Treatment Console
MSRP: \$12,125

Console Dimensions:

Width: 22.7"

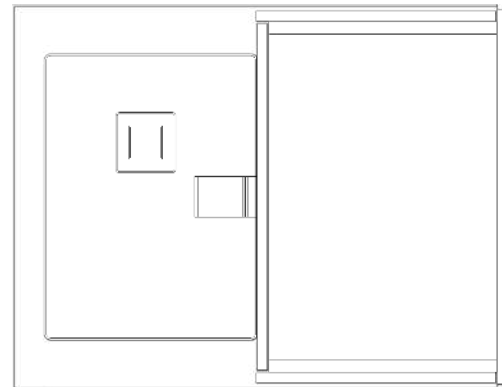
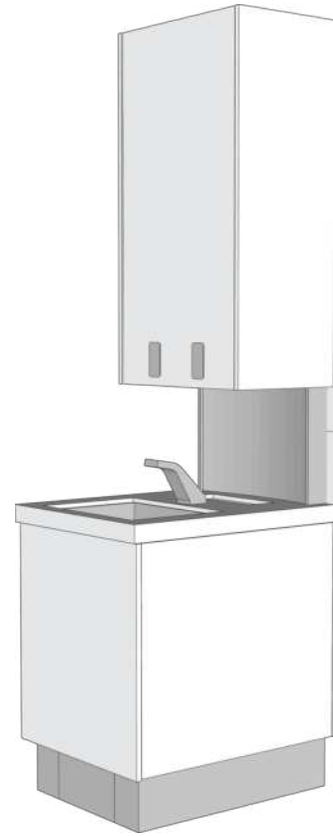
Height: 87.5"

Depth: 29.3"

For all dimensions please see the respective installation guide

Standard Features Includes:

- ✘ Structural steel powder coated base with built in levelers
- ✘ Premium embossed laminate fronts and doors
- ✘ Soft close concealed hinge doors
- ✘ Two inch thick designer solid surface work surface
- ✘ Designer under mount stainless steel sink
- ✘ Hands free Perfetta faucet
- ✘ Through counter waste
- ✘ Hands free soap dispensing
- ✘ Towel dispensing



All Anthos Perfetta and Anthos Linea Dental Cabinet Systems
are available to the Patterson design team in
2D version for floor planning necessities
AND
3D version for digital walk through presentations



ANTHOS LINEA CLINICAL CABINETRY



ANTHOS LINEA REAR TREATMENT CONSOLE

Vendor Item #: ALRTC B11-H11-U11
PDCP SAP #: 101707787
Description: Rear TX console, All Drawers to Front, Hutch
MSRP: \$8,920

Console Dimensions:

Width: 42.5"

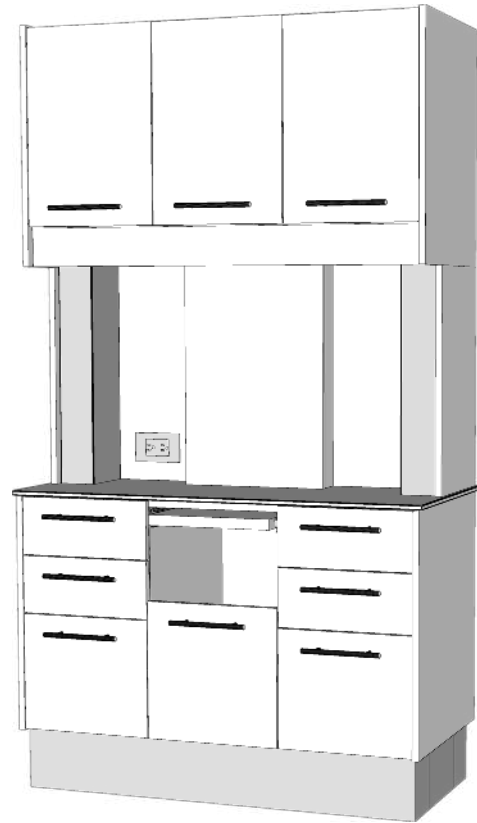
Height: 75.5"

Depth: 21.2"

For all dimensions please see the respective installation guide

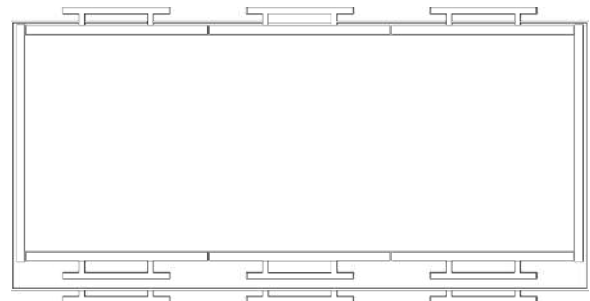
Standard Features Includes:

- ❑ Structural steel powder coated base with built in levelers
- ❑ Installed free-standing or flush to wall
- ❑ Soft close drawers
- ❑ Soft close concealed hinge doors
- ❑ Premium embossed laminate fronts and doors
- ❑ Designer solid surface work surface
- ❑ Fully chaised for future equipment integration
- ❑ Hospital grade duplex
- ❑ Task lighting



Easily Integrated Equipment:

- ❑ ALRTC MM1 - Track-mounted monitor arm
SAP #: 101707797 MSRP: \$1,195
-
- ❑ ALRTC 4Z - Cefla floating work surface with plate
SAP #: 101707833 MSRP: \$1,290



All Anthos Perfetta and Anthos Linea Dental Cabinet Systems
are available to the Patterson design team in
2D version for floor planning necessities
AND
3D version for digital walk through presentations



ANTHOS LINEA REAR TREATMENT CONSOLE

Vendor Item #: ALRTC B12-H00-U12
PDCP SAP #: 101707788
Description: Rear TX Console, All Drawers to Front,
No Hutch
MSRP: \$7,870



Console Dimensions:

Width: 42.5"

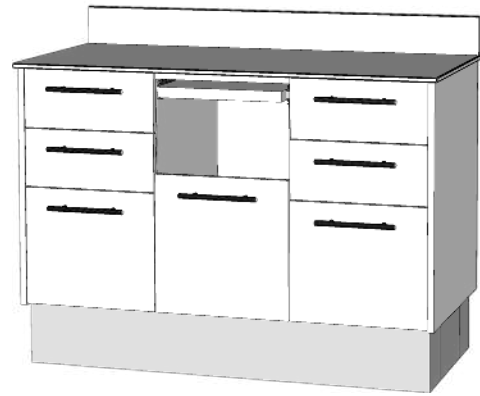
Height: 75.5"

Depth: 21.2"

For all dimensions please see the respective installation guide

Standard Features Includes:

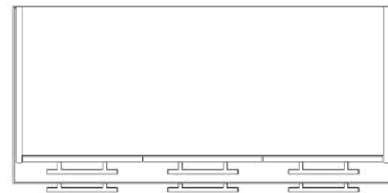
- ❑ Structural steel powder coated base with built in levelers
- ❑ Installed flush to wall
- ❑ Soft close drawers
- ❑ Soft close concealed hinge doors
- ❑ Premium embossed laminate fronts and doors
- ❑ Designer solid surface work surface
- ❑ Task lighting



Easily Integrated Equipment:

- ❑ ALRTC MM1 - Track-mounted monitor arm
SAP #: 101707797 MSRP: \$1,195

- ❑ ALRTC 4Z - Cefla floating work surface with plate
SAP #: 101707833 MSRP: \$1,290



All Anthos Perfetta and Anthos Linea Dental Cabinet Systems
are available to the Patterson design team in
2D version for floor planning necessities
AND
3D version for digital walk through presentations



ANTHOS LINEA REAR TREATMENT CONSOLE

Vendor Item #: ALRTC B14-H11-U11
 PDCP SAP #: 101707789
 Description: Rear TX Console, Left Drawer to Front, Right Drawers to Side, Hutch
 MSRP: \$8,920

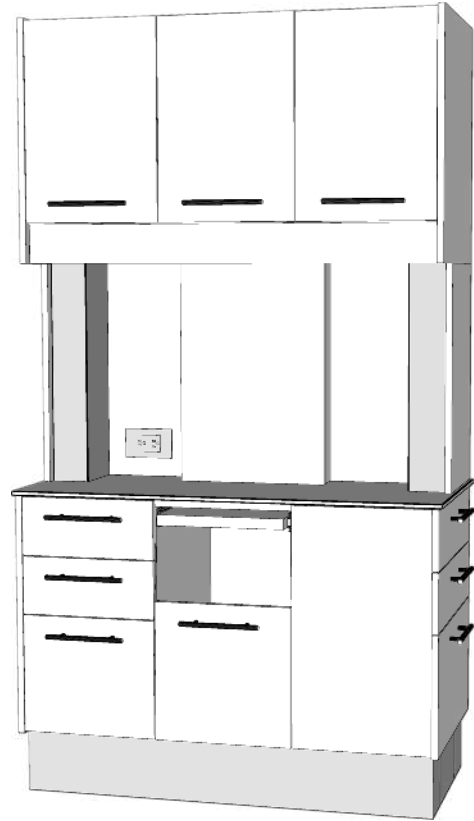
Console Dimensions:

Width: 42.5"
 Height: 75.5"
 Depth: 21.2"

For all dimensions please see the respective installation guide

Standard Features Includes:

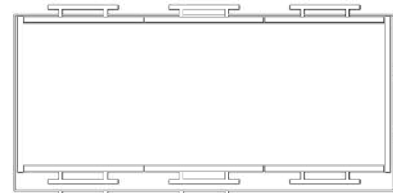
- ✘ Structural steel powder coated base with built in levelers
- ✘ Installed free-standing or flush to wall
- ✘ Soft close drawers
- ✘ Soft close concealed hinge doors
- ✘ Premium embossed laminate fronts and doors
- ✘ Designer solid surface work surface
- ✘ Fully chaised for future equipment integration
- ✘ Hospital grade duplex
- ✘ Task lighting



Easily Integrated Equipment:

- ✘ ALRTC MM1 - Track-mounted monitor arm
 SAP #: 101707797 MSRP: \$1,195

- ✘ ALRTC 4Z - Cefla floating work surface with plate
 SAP #: 101707833 MSRP: \$1,290



All Anthos Perfetta and Anthos Linea Dental Cabinet Systems are available to the Patterson design team in 2D version for floor planning necessities AND 3D version for digital walk through presentations



ANTHOS LINEA REAR TREATMENT CONSOLE

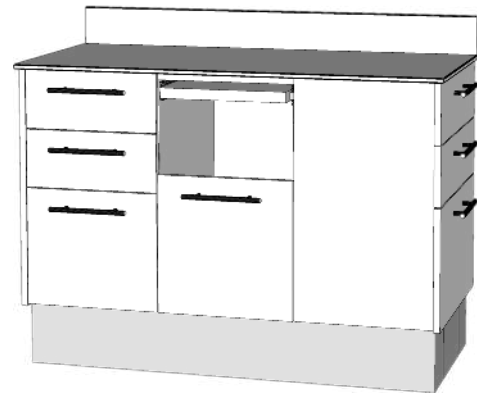
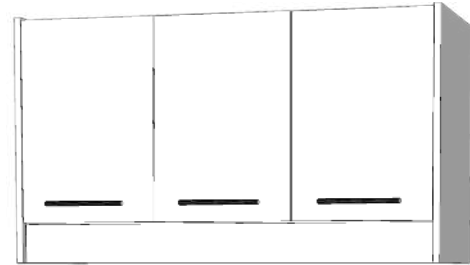
Vendor Item #: ALRTC B15-H00-U12
PDCP SAP #: 101707790
Description: Rear TX Console, Left Drawers to Front, Right Drawers to Side, No Hutch
MSRP: \$7,870
Console Dimensions:

Width: 42.5"
Height: 75.5"
Depth: 21.2"

For all dimensions please see the respective installation guide

Standard Features Includes:

- ❑ Structural steel powder coated base with built in levelers
- ❑ Installed flush to wall
- ❑ Soft close drawers
- ❑ Soft close concealed hinge doors
- ❑ Premium embossed laminate fronts and doors
- ❑ Designer solid surface work surface
- ❑ Task lighting



Easily Integrated Equipment:

- ❑ ALRTC MM1 - Track-mounted monitor arm
SAP #: 101707797 MSRP: \$1,195
-
- ❑ ALRTC 4Z - Cefla floating work surface with plate
SAP #: 101707833 MSRP: \$1,290



All Anthos Perfetta and Anthos Linea Dental Cabinet Systems
are available to the Patterson design team in
2D version for floor planning necessities
AND
3D version for digital walk through presentations



ANTHOS LINEA REAR TREATMENT CONSOLE

Vendor Item #: ALRTC B17-H11-U11
PDCP SAP #: 101707791
Description: Rear TX Console, Left Drawer to Side,
Right Drawer to Front, Hutch
MSRP: \$8,920

Console Dimensions:

Width: 42.5"

Height: 75.5"

Depth: 21.2"

For all dimensions please see the respective installation guide

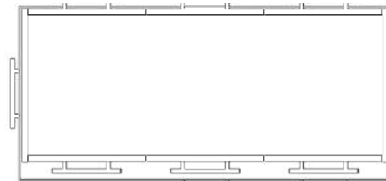
Standard Features Includes:

- ❑ Structural steel powder coated base with built in levelers
- ❑ Installed free-standing or flush to wall
- ❑ Soft close drawers
- ❑ Soft close concealed hinge doors
- ❑ Premium embossed laminate fronts and doors
- ❑ Designer solid surface work surface
- ❑ Fully chaised for future equipment integration
- ❑ Hospital grade duplex
- ❑ Task lighting



Easily Integrated Equipment:

- ❑ ALRTC MM1 - Track-mounted monitor arm
SAP #: 101707797 MSRP: \$1,195
-
- ❑ ALRTC 4Z - Cefla floating work surface with plate
SAP #: 101707833 MSRP: \$1,290



All Anthos Perfetta and Anthos Linea Dental Cabinet Systems
are available to the Patterson design team in
2D version for floor planning necessities
AND
3D version for digital walk through presentations



ANTHOS LINEA REAR TREATMENT CONSOLE

Vendor Item #: ALRTC B18-H00-U12
PDCP SAP #: 101707792
Description: Rear TX Console, Left Drawer to Side,
Right Drawers to Front, No Hutch
MSRP: \$7,870

Console Dimensions:

Width: 42.5"

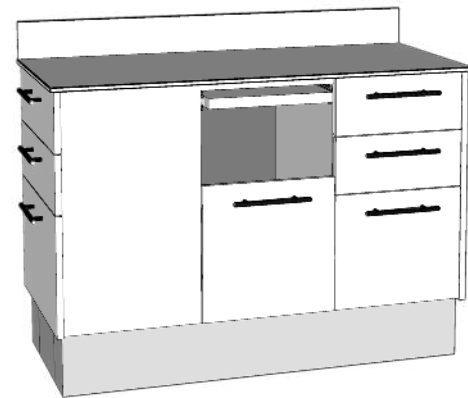
Height: 75.5"

Depth: 21.2"

For all dimensions please see the respective installation guide

Standard Features Includes:

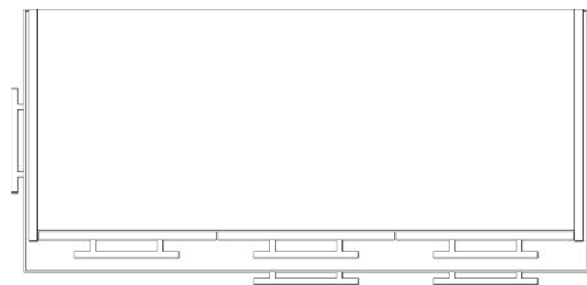
- ❑ Structural steel powder coated base with built in levelers
- ❑ Installed flush to wall
- ❑ Soft close drawers
- ❑ Soft close concealed hinge doors
- ❑ Premium embossed laminate fronts and doors
- ❑ Designer solid surface work surface



Easily Integrated Equipment:

- ❑ ALRTC MM1 - Track-mounted monitor arm
SAP #: 101707797 MSRP: \$1,195

- ❑ ALRTC 4Z - Cefla floating work surface with plate
SAP #: 101707833 MSRP: \$1,290



All Anthos Perfetta and Anthos Linea Dental Cabinet Systems
are available to the Patterson design team in
2D version for floor planning necessities
AND
3D version for digital walk through presentations



ANTHOS LINEA REAR TREATMENT CONSOLE

Vendor Item #: ALRTC B21-H11-U21
 PDCP SAP #: 101707793
 Description: Rear TX Console, Right Side Sink, Hutch
 MSRP: \$15,745

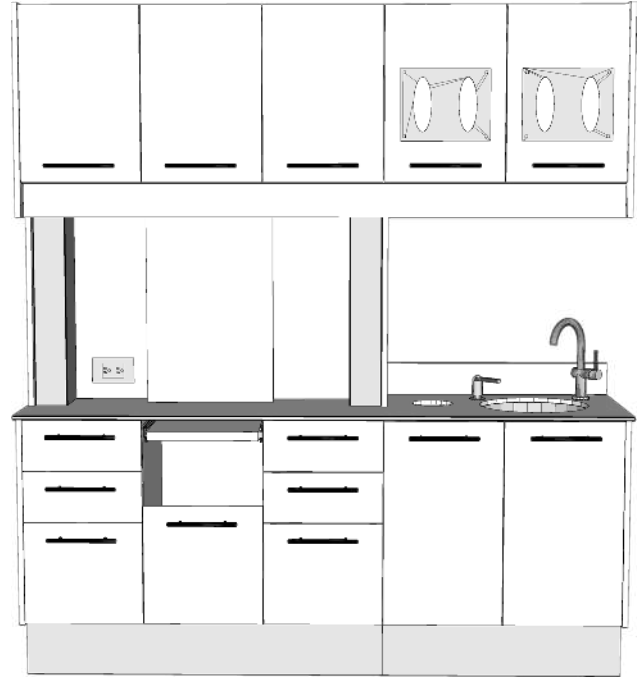
Console Dimensions:

Width: 69.4"
 Height: 75.5"
 Depth: 21.2"

For all dimensions please see the respective installation guide

Standard Features Includes:

- ❑ Structural steel powder coated base with built in levelers
- ❑ Installed flush to wall
- ❑ Soft close drawers
- ❑ Soft close concealed hinge doors
- ❑ Premium embossed laminate fronts and doors
- ❑ Designer solid surface work surface
- ❑ Fully chaised for future equipment integration
- ❑ Hospital grade duplex
- ❑ Task lighting
- ❑ Undermount stainless steel sink with faucet and soap dispenser
- ❑ Above sink dispensing for gloves and towels



Easily Integrated Equipment:

- ❑ ALRTC MM1 - Track-mounted monitor arm
 SAP #: 101707797 MSRP: \$1,195

- ❑ ALRTC 4Z - Cefla floating work surface with plate
 SAP #: 101707833 MSRP: \$1,290



All Anthos Perfetta and Anthos Linea Dental Cabinet Systems
 are available to the Patterson design team in
 2D version for floor planning necessities
 AND
 3D version for digital walk through presentations



ANTHOS LINEA REAR TREATMENT CONSOLE

Vendor Item #: ALRTC B22-H00-U21
 PDCP SAP #: 101707794
 Description: Rear TX Console, Right Side Sink, No Hutch
 MSRP: \$14,695
 Console Dimensions:

Width: 69.4"

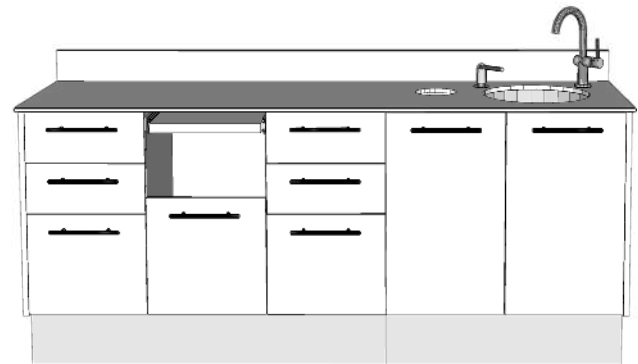
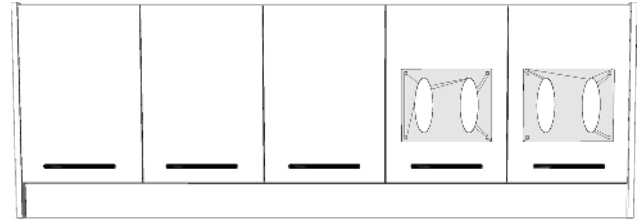
Height: 75.5"

Depth: 21.2"

For all dimensions please see the respective installation guide

Standard Features Includes:

- ❑ Structural steel powder coated base with built in levelers
- ❑ Installed flush to wall
- ❑ Soft close drawers
- ❑ Soft close concealed hinge doors
- ❑ Premium embossed laminate fronts and doors
- ❑ Designer solid surface work surface
- ❑ Undermount stainless steel sink with faucet and soap dispenser
- ❑ Above sink dispensing for gloves and towels



Easily Integrated Equipment:

- ❑ ALRTC MM1 - Track-mounted monitor arm
 SAP #: 101707797 MSRP: \$1,195

- ❑ ALRTC 4Z - Cefla floating work surface with plate
 SAP #: 101707833 MSRP: \$1,290



All Anthos Perfetta and Anthos Linea Dental Cabinet Systems
 are available to the Patterson design team in
 2D version for floor planning necessities
 AND
 3D version for digital walk through presentations



ANTHOS LINEA REAR TREATMENT CONSOLE

Vendor Item #: ALRTC B24-H11-U24
PDCP SAP #: 101707795
Description: Rear TX Console, Left Side Sink,
Hutch
MSRP: \$15,745

Console Dimensions:

Width: 69.4"

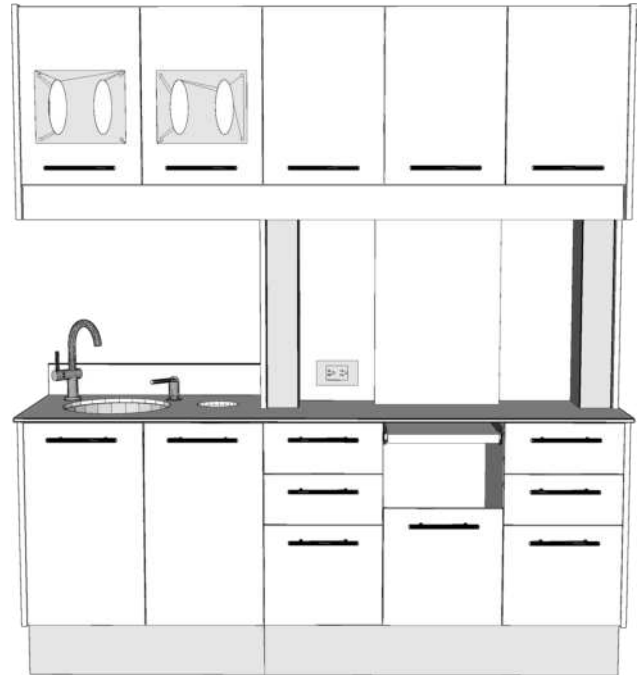
Height: 75.5"

Depth: 21.2"

For all dimensions please see the respective installation guide

Standard Features Includes:

- ❑ Structural steel powder coated base with built in levelers
- ❑ Installed flush to wall
- ❑ Soft close drawers
- ❑ Soft close concealed hinge doors
- ❑ Premium embossed laminate fronts and doors
- ❑ Designer solid surface work surface
- ❑ Fully chaised for future equipment integration
- ❑ Hospital grade duplex
- ❑ Task lighting
- ❑ Undermount stainless steel sink with faucet and soap dispenser
- ❑ Above sink dispensing for gloves and towels



Easily Integrated Equipment:

- ❑ ALRTC MM1 - Track-mounted monitor arm
SAP #: 101707797 MSRP: \$1,195
-
- ❑ ALRTC 4Z - Cefla floating work surface with plate
SAP #: 101707833 MSRP: \$1,290



All Anthos Perfetta and Anthos Linea Dental Cabinet Systems
are available to the Patterson design team in
2D version for floor planning necessities
AND
3D version for digital walk through presentations



ANTHOS LINEA REAR TREATMENT CONSOLE

Vendor Item #: ALRTC B25-H00-U24
 PDCP SAP #: 101707796
 Description: Rear TX Console, Left Side Sink,
 No Hutch
 MSRP: \$14,695

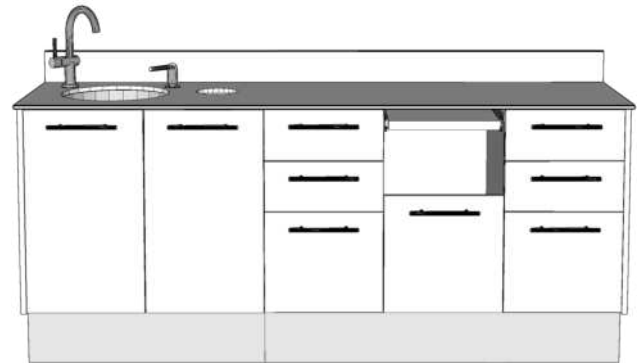
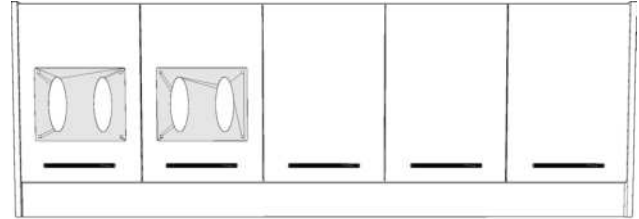
Console Dimensions:

Width: 69.4"
 Height: 75.5"
 Depth: 21.2"

For all dimensions please see the respective installation guide

Standard Features Includes:

- ✘ Structural steel powder coated base with built in levelers
- ✘ Installed flush to wall
- ✘ Soft close drawers
- ✘ Soft close concealed hinge doors
- ✘ Premium embossed laminate fronts and doors
- ✘ Designer solid surface work surface
- ✘ Undermount stainless steel sink with faucet and soap dispenser
- ✘ Above sink dispensing for gloves and towels



Easily Integrated Equipment:

- ✘ ALRTC MM1 - Track-mounted monitor arm
 SAP #: 101707797 MSRP: \$1,195

- ✘ ALRTC 4Z - Cefla floating work surface with plate
 SAP #: 101707833 MSRP: \$1,290



All Anthos Perfetta and Anthos Linea Dental Cabinet Systems
 are available to the Patterson design team in
 2D version for floor planning necessities
 AND
 3D version for digital walk through presentations



ANTHOS LINEA GLIDING MONITOR MOUNT

Vendor Item #: ALRTC MM1
PDCP SAP #: 101707797
Description: Linea Gliding Monitor Mount for Rear Treatment Console

MSRP: \$1,195

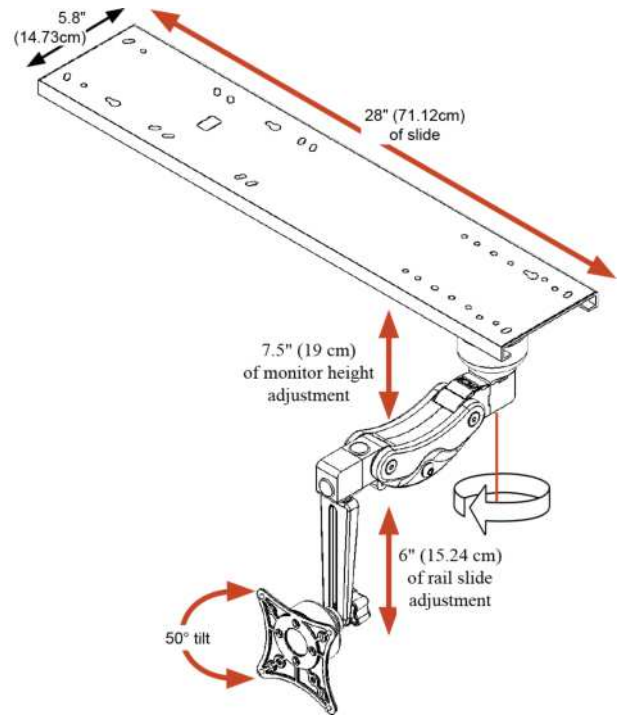
Console Dimensions:

Width: 28"
Depth: 5.8"

For all dimensions please see the respective installation guide

Standard Features Includes:

- ☒ Accomodates monitors up to 18 lbs
- ☒ Effortless stowability and tilt
- ☒ Organizes cables
- ☒ 28" (71.12 cm) of horizontal slide



All Anthos Perfetta and Anthos Linea Dental Cabinet Systems are available to the Patterson design team in 2D version for floor planning necessities AND 3D version for digital walk through presentations



ANTHOS LINEA SIDE TREATMENT CONSOLE

Vendor Item #: ALSTC B31-H00-U31
PDCP SAP #: 101707798
Description: Right TX Console, Left Side Sink, Right Side Drawers, Upper Disp. Cab.
MSRP: \$6,825

Console Dimensions:

Width: 56.8"

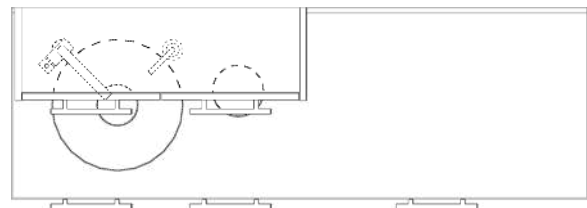
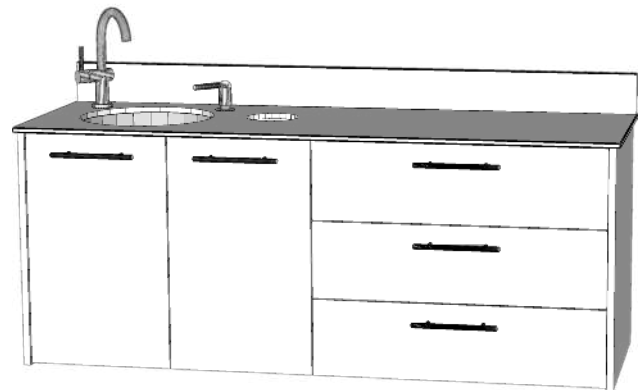
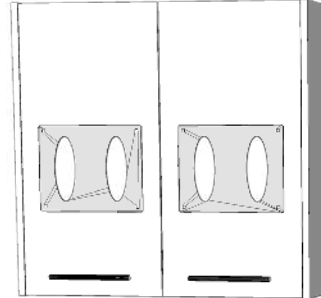
Height: 76.2"

Depth: 19.8"

For all dimensions please see the respective installation guide

Standard Features Includes:

- ❑ Modern floating style console
- ❑ Installed flush to wall
- ❑ Soft close drawers
- ❑ Soft close concealed hinge doors
- ❑ Premium embossed laminate fronts and doors
- ❑ Designer solid surface work surface
- ❑ Undermount stainless steel sink with faucet and soap dispenser
- ❑ Above sink dispensing for gloves and towels



All Anthos Perfetta and Anthos Linea Dental Cabinet Systems
are available to the Patterson design team in
2D version for floor planning necessities
AND
3D version for digital walk through presentations



ANTHOS LINEA SIDE TREATMENT CONSOLE

Vendor Item #: ALSTC B31-H00-U33
PDCP SAP #: 101707799
Description: Right TX Console, Left Sink, Right Side
Drawers, Upper Disp. & Storage Cab.
MSRP: \$7,665

Console Dimensions:

Width: 56.8"

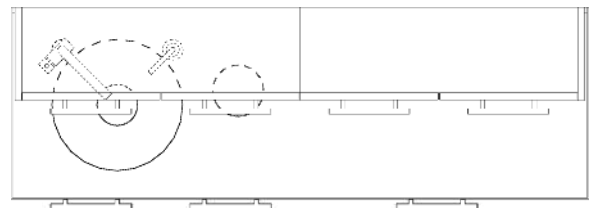
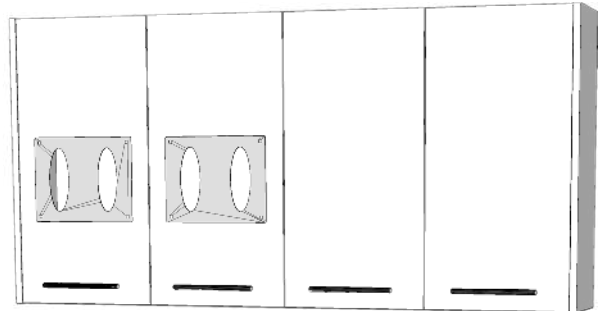
Height: 76.2"

Depth: 19.8"

For all dimensions please see the respective installation guide

Standard Features Includes:

- ❑ Modern floating style console
- ❑ Installed flush to wall
- ❑ Soft close drawers
- ❑ Soft close concealed hinge doors
- ❑ Premium embossed laminate fronts and doors
- ❑ Designer solid surface work surface
- ❑ Undermount stainless steel sink with faucet and soap dispenser
- ❑ Above sink dispensing for gloves and towels
- ❑ Above counter storage console



All Anthos Perfetta and Anthos Linea Dental Cabinet Systems
are available to the Patterson design team in
2D version for floor planning necessities
AND
3D version for digital walk through presentations



ANTHOS LINEA SIDE TREATMENT CONSOLE

Vendor Item #: ALSTC B31-H00-U00
PDCP SAP #: 101707800
Description: Side TX Console, Left Side Sink, Right Side Drawers, No Upper Cab.
MSRP: \$5,515

Console Dimensions:

Width: 56.8"

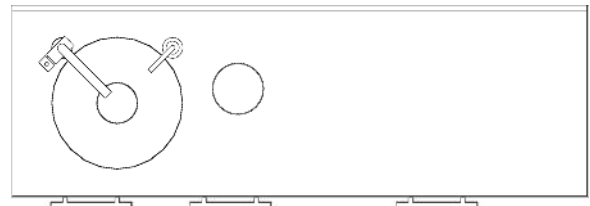
Height: 32.5"

Depth: 19.8"

For all dimensions please see the respective installation guide

Standard Features Includes:

- ❑ Modern floating style console
- ❑ Installed flush to wall
- ❑ Soft close drawers
- ❑ Soft close concealed hinge doors
- ❑ Premium embossed laminate fronts and doors
- ❑ Designer solid surface work surface
- ❑ Undermount stainless steel sink with faucet and soap dispenser



All Anthos Perfetta and Anthos Linea Dental Cabinet Systems
are available to the Patterson design team in
2D version for floor planning necessities
AND
3D version for digital walk through presentations



ANTHOS LINEA SIDE TREATMENT CONSOLE

Vendor Item #: ALSTC B32-H00-U31
PDCP SAP #: 101707801
Description: Side TX Cinsole, Left Side Drawers,
Right Side Sink, Upper Disp. Cab.
MSRP: \$6,825

Console Dimensions:

Width: 56.8"

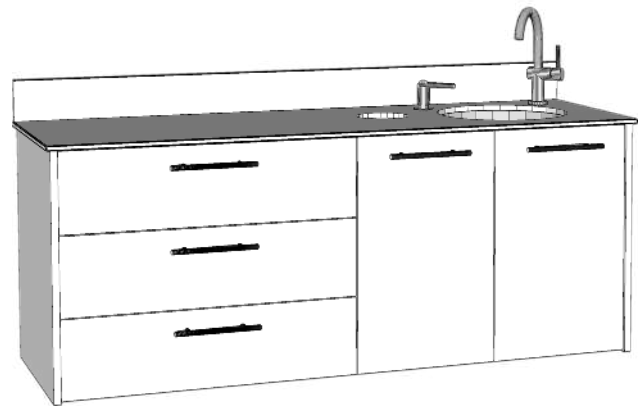
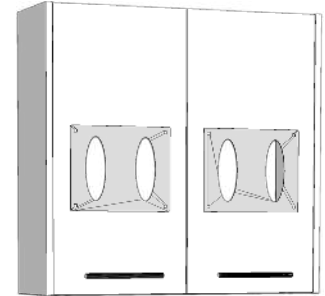
Height: 76.2"

Depth: 19.2"

For all dimensions please see the respective installation guide

Standard Features Includes:

- ❑ Modern floating style console
- ❑ Installed flush to wall
- ❑ Soft close drawers
- ❑ Soft close concealed hinge doors
- ❑ Premium embossed laminate fronts and doors
- ❑ Designer solid surface work surface
- ❑ Undermount stainless steel sink with faucet and soap dispenser
- ❑ Above sink dispensing for gloves and towels



All Anthos Perfetta and Anthos Linea Dental Cabinet Systems
are available to the Patterson design team in
2D version for floor planning necessities
AND
3D version for digital walk through presentations



ANTHOS LINEA SIDE TREATMENT CONSOLE

Vendor Item #: ALSTC B32-H00-U34
PDCP SAP #: 101707802
Description: Side TX Console, Left Side Drawers, Right Side Sink, Upper Disp. & Storage Cab.
MSRP: \$7,665

Console Dimensions:

Width: 56.8"

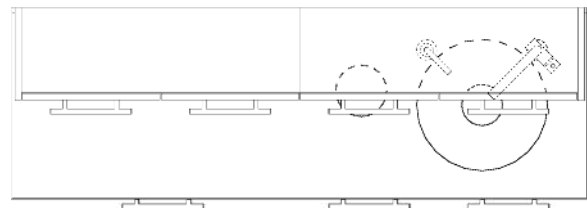
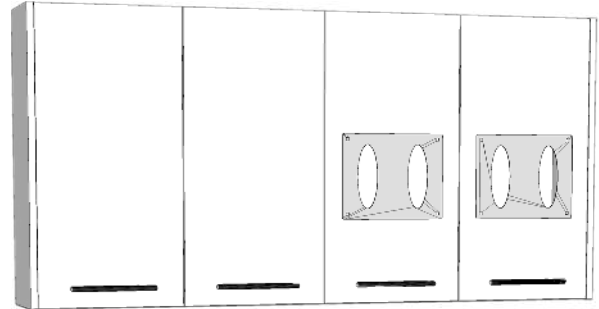
Height: 76.2"

Depth: 19.2"

For all dimensions please see the respective installation guide

Standard Features Includes:

- ❑ Modern floating style console
- ❑ Installed flush to wall
- ❑ Soft close drawers
- ❑ Soft close concealed hinge doors
- ❑ Premium embossed laminate fronts and doors
- ❑ Designer solid surface work surface
- ❑ Undermount stainless steel sink with faucet and soap dispenser
- ❑ Above sink dispensing for gloves and towels
- ❑ Above counter storage console



All Anthos Perfetta and Anthos Linea Dental Cabinet Systems
are available to the Patterson design team in
2D version for floor planning necessities
AND
3D version for digital walk through presentations



ANTHOS LINEA SIDE TREATMENT CONSOLE

Vendor Item #: ALSTC B32-H00-U00
PDCP SAP #: 101707803
Description: Side TX Console, Left Side Drawers,
Right Side Sink, No Upper Cab.
MSRP: \$5,515

Console Dimensions:

Width: 56.8"

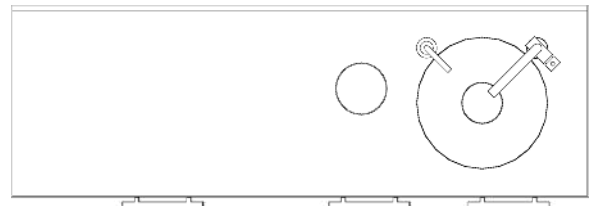
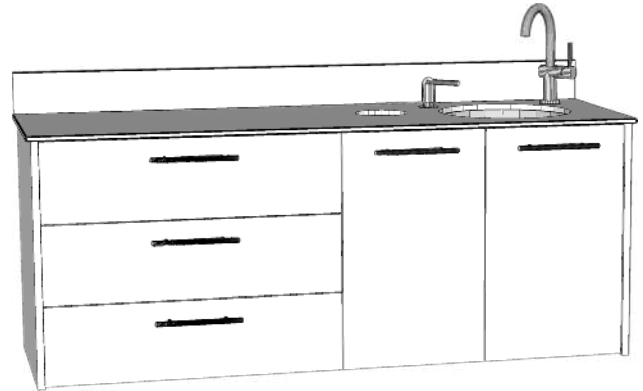
Height: 32.5"

Depth: 19.2"

For all dimensions please see the respective installation guide

Standard Features Includes:

- ❑ Modern floating style console
- ❑ Installed flush to wall
- ❑ Soft close drawers
- ❑ Soft close concealed hinge doors
- ❑ Premium embossed laminate fronts and doors
- ❑ Designer solid surface work surface
- ❑ Undermount stainless steel sink with faucet and soap dispenser



All Anthos Perfetta and Anthos Linea Dental Cabinet Systems
are available to the Patterson design team in
2D version for floor planning necessities
AND
3D version for digital walk through presentations



ANTHOS LINEA SIDE TREATMENT CONSOLE

Vendor Item #: ALSTC B33-H00-U32
PDCP SAP #: 101707804
Description: Side TX Console, Left and Right side
Drawers, Uppper Storage Cab.
MSRP: \$6,825



Console Dimensions:

Width: 56.8"

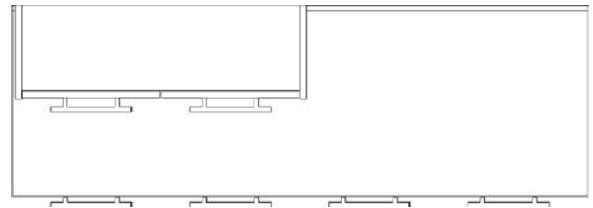
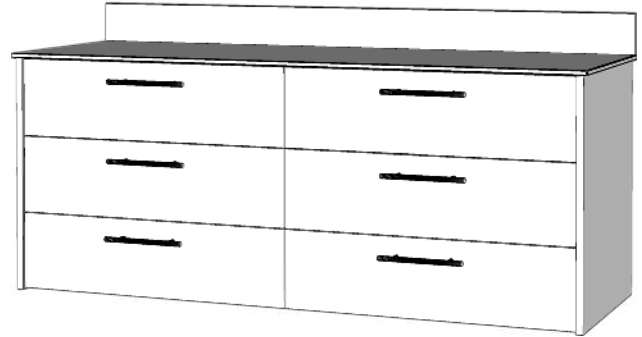
Height: 76.2"

Depth: 19.2"

For all dimensions please see the respective installation guide

Standard Features Includes:

- ❑ Modern floating style console
- ❑ Installed flush to wall
- ❑ Soft close drawers
- ❑ Premium embossed laminate fronts and doors
- ❑ Designer solid surface work surface
- ❑ Upper storage cabinet



All Anthos Perfetta and Anthos Linea Dental Cabinet Systems
are available to the Patterson design team in
2D version for floor planning necessities
AND
3D version for digital walk through presentations



ANTHOS LINEA SIDE TREATMENT CONSOLE

Vendor Item #: ALSTC B33-H00-U35
PDCP SAP #: 101707805
Description: Side TX Console, Left and Right Side
Drawers, Upper Storage Cab.
MSRP: \$7,665
Console Dimensions:

Width: 56.8"

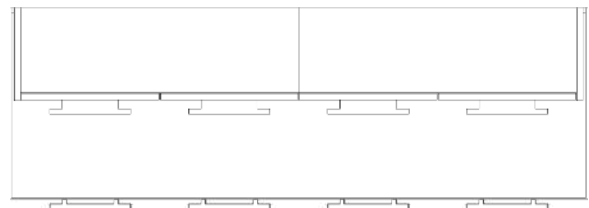
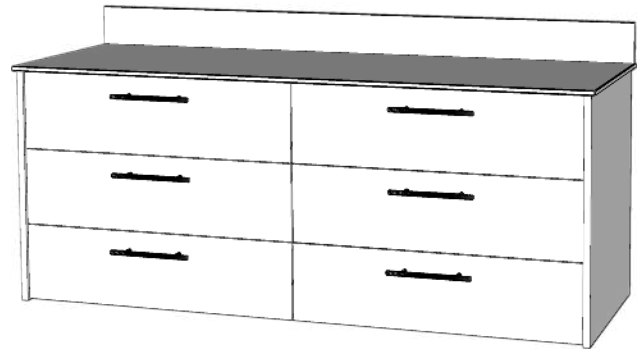
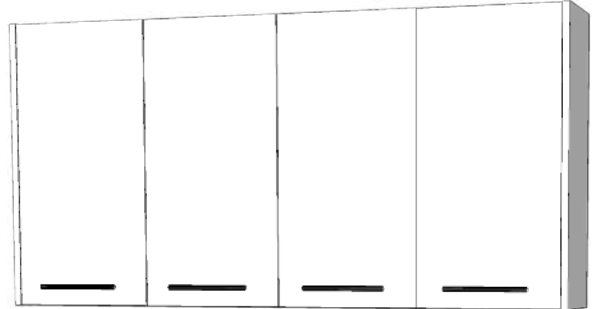
Height: 76.2"

Depth: 19.2"

For all dimensions please see the respective installation guide

Standard Features Includes:

- ❑ Modern floating style console
- ❑ Installed flush to wall
- ❑ Soft close drawers
- ❑ Premium embossed laminate fronts and doors
- ❑ Designer solid surface work surface
- ❑ Upper storage cabinets



All Anthos Perfetta and Anthos Linea Dental Cabinet Systems
are available to the Patterson design team in
2D version for floor planning necessities
AND
3D version for digital walk through presentations



ANTHOS LINEA SIDE TREATMENT CONSOLE

Vendor Item #: ALSTC B33-H00-U00
PDCP SAP #: 101707806
Description: Side TX Console, Left and Right Side
Drawers, No Upper Cab.
MSRP: \$5,515

Console Dimensions:

Width: 56.8"

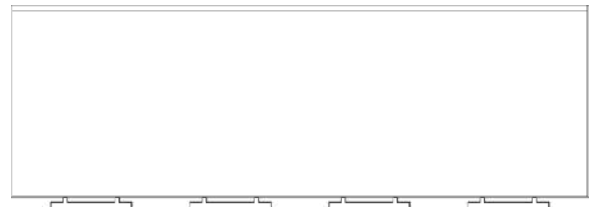
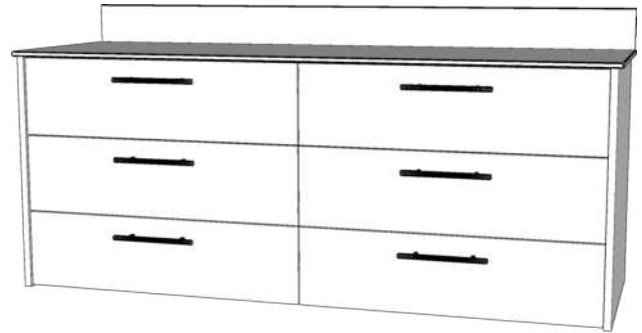
Height: 32.5"

Depth: 19.2"

For all dimensions please see the respective installation guide

Standard Features Includes:

- ❑ Modern floating style console
- ❑ Installed flush to wall
- ❑ Soft close drawers
- ❑ Premium embossed laminate fronts and doors
- ❑ Designer solid surface work surface



All Anthos Perfetta and Anthos Linea Dental Cabinet Systems
are available to the Patterson design team in
2D version for floor planning necessities
AND
3D version for digital walk through presentations



ANTHOS LINEA SIDE TREATMENT CONSOLE

Vendor Item #: ALSTC B34-H00-U31
PDCP SAP #: 101707807
Description: Side TX Console, Left Side Sink, Right Side Open, Upper Disp. Cab.
MSRP: \$6,825
Console Dimensions:

Width: 56.8"

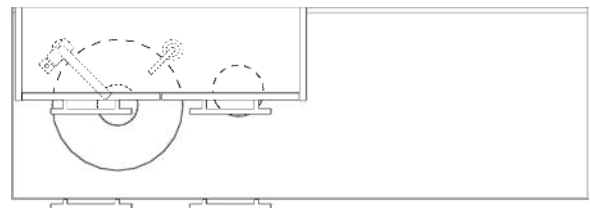
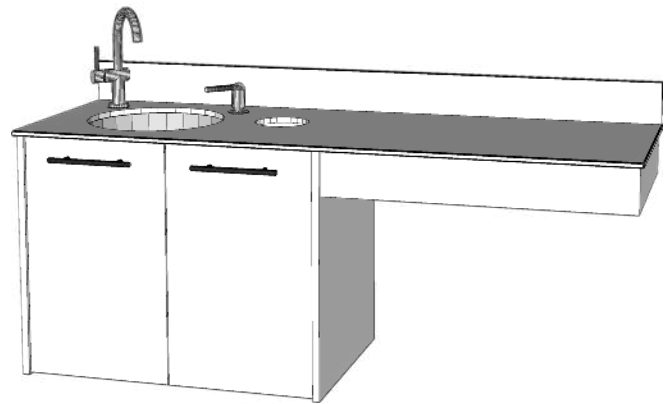
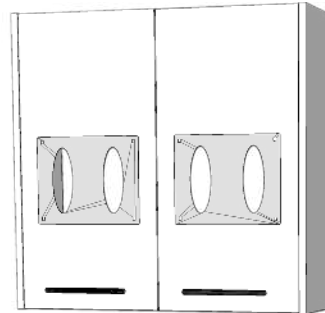
Height: 76.2"

Depth: 19.2"

For all dimensions please see the respective installation guide

Standard Features Includes:

- ❑ Modern floating style console
- ❑ Installed flush to wall
- ❑ Knee space
- ❑ Soft close concealed hinge doors
- ❑ Premium embossed laminate fronts and doors
- ❑ Designer solid surface work surface
- ❑ Undermount stainless steel sink with faucet and soap dispenser
- ❑ Above sink dispensing for gloves and towels



All Anthos Perfetta and Anthos Linea Dental Cabinet Systems
are available to the Patterson design team in
2D version for floor planning necessities
AND
3D version for digital walk through presentations



ANTHOS LINEA SIDE TREATMENT CONSOLE

Vendor Item #: ALSTC B34-H00-U33

PDCP SAP #: 101707808

Description: Side TX Console, Left Side Sink, Right Side Open, Upper Disp. and Storage Cab.

MSRP: \$7,665

Console Dimensions:

Width: 56.8"

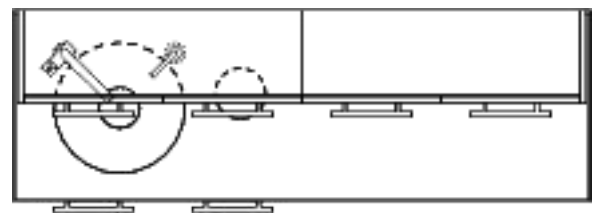
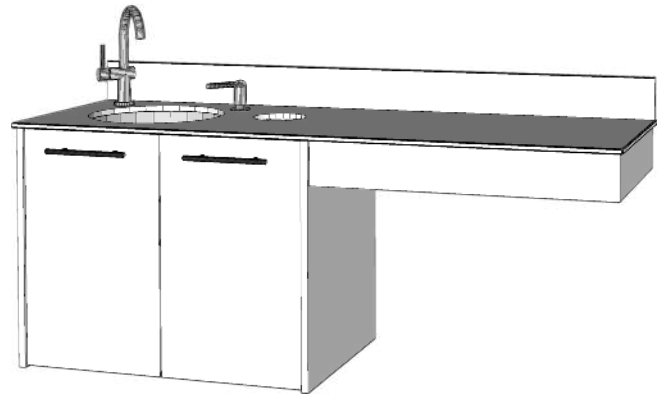
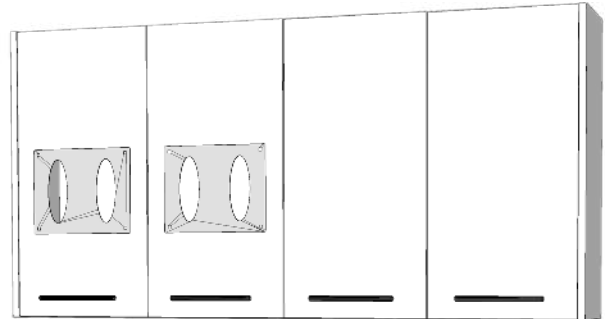
Height: 76.2"

Depth: 19.2"

For all dimensions please see the respective installation guide

Standard Features Includes:

- ❑ Modern floating style console
- ❑ Installed flush to wall
- ❑ Knee space
- ❑ Soft close concealed hinge doors
- ❑ Premium embossed laminate fronts and doors
- ❑ Designer solid surface work surface
- ❑ Undermount stainless steel sink with faucet and soap dispenser
- ❑ Above sink dispensing for gloves and towels
- ❑ Above counter storage console



All Anthos Perfetta and Anthos Linea Dental Cabinet Systems
are available to the Patterson design team in
2D version for floor planning necessities
AND
3D version for digital walk through presentations



ANTHOS LINEA SIDE TREATMENT CONSOLE

Vendor Item #: ALSTC B34-H00-U00
PDCP SAP #: 101707809
Description: Side TX Cinsole, Left Side Sink, Right Side Open, No Upper Cab.
MSRP: \$5,515

Console Dimensions:

Width: 56.8"

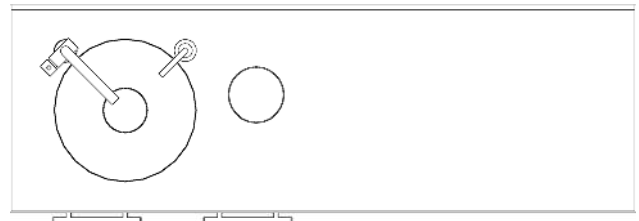
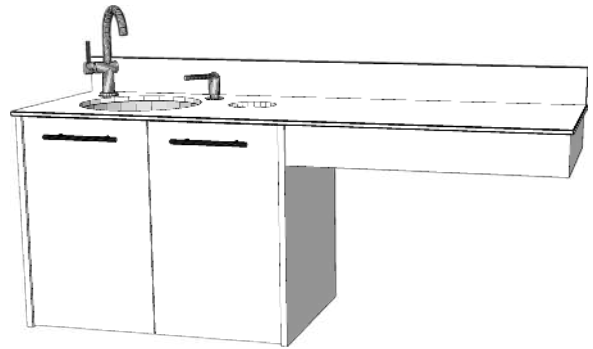
Height: 32.5"

Depth: 19.2"

For all dimensions please see the respective installation guide

Standard Features Includes:

- ❑ Modern floating style console
- ❑ Installed flush to wall
- ❑ Knee space
- ❑ Premium embossed laminate fronts and doors
- ❑ Designer solid surface work surface



All Anthos Perfetta and Anthos Linea Dental Cabinet Systems
are available to the Patterson design team in
2D version for floor planning necessities
AND
3D version for digital walk through presentations



ANTHOS LINEA SIDE TREATMENT CONSOLE

Vendor Item #: ALSTC B35-H00-U31
PDCP SAP #: 101707810
Description: Side TX Console, Left Side Open,
Right Side Sink, Upper Disp. Cab.
MSRP: \$6,825

Console Dimensions:

Width: 56.8"

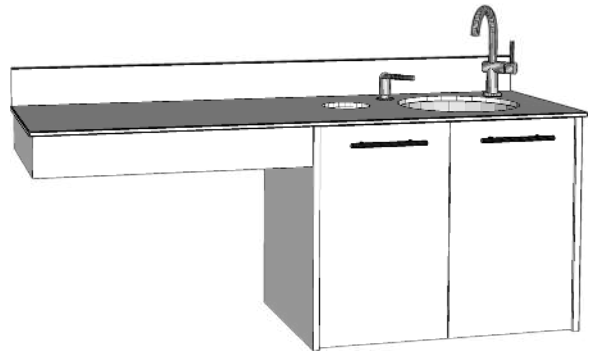
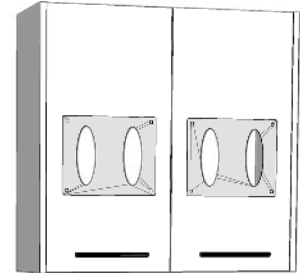
Height: 76.2"

Depth: 19.2"

For all dimensions please see the respective installation guide

Standard Features Includes:

- ❑ Modern floating style console
- ❑ Installed flush to wall
- ❑ Knee space
- ❑ Soft close concealed hinge doors
- ❑ Premium embossed laminate fronts and doors
- ❑ Designer solid surface work surface
- ❑ Undermount stainless steel sink with faucet and soap dispenser
- ❑ Above sink dispensing for gloves and towels



All Anthos Perfetta and Anthos Linea Dental Cabinet Systems
are available to the Patterson design team in
2D version for floor planning necessities
AND
3D version for digital walk through presentations



ANTHOS LINEA SIDE TREATMENT CONSOLE

Vendor Item #: ALSTC B35-H00-U34
PDCP SAP #: 101707811
Description: Side TX Console, Left Side Open, Right Side Sink, Upper Disp. & Storage Cab.
MSRP: \$7,665

Console Dimensions:

Width: 56.8"

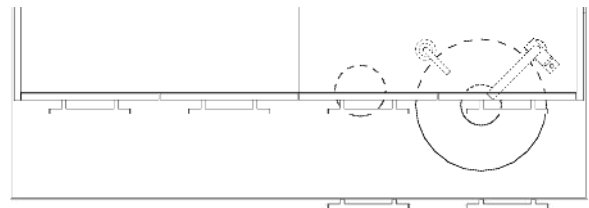
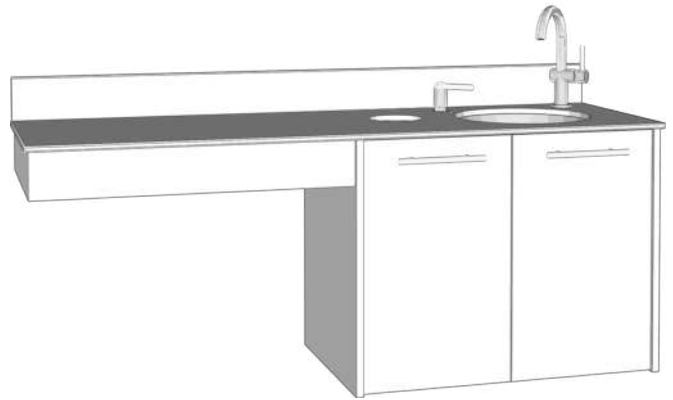
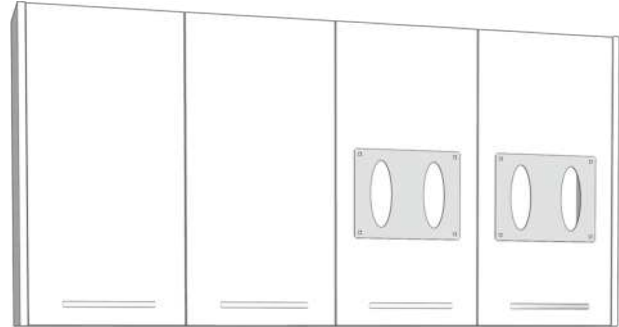
Height: 76.2"

Depth: 19.2"

For all dimensions please see the respective installation guide

Standard Features Includes:

- ❑ Modern floating style console
- ❑ Installed flush to wall
- ❑ Knee space
- ❑ Soft close concealed hinge doors
- ❑ Premium embossed laminate fronts and doors
- ❑ Designer solid surface work surface
- ❑ Undermount stainless steel sink with faucet and soap dispenser
- ❑ Above sink dispensing for gloves and towels
- ❑ Above counter storage console



All Anthos Perfetta and Anthos Linea Dental Cabinet Systems
are available to the Patterson design team in
2D version for floor planning necessities
AND
3D version for digital walk through presentations



ANTHOS LINEA SIDE TREATMENT CONSOLE

Vendor Item #: ALSTC B35-H00-U00
PDCP SAP #: 101707812
Description: Side TX Console, Left Side Open,
Right Side Sink, No Upper Cab.
MSRP: \$5,515

Console Dimensions:

Width: 56.8"

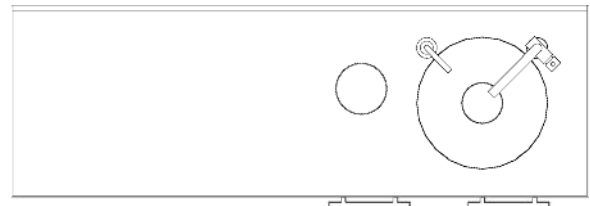
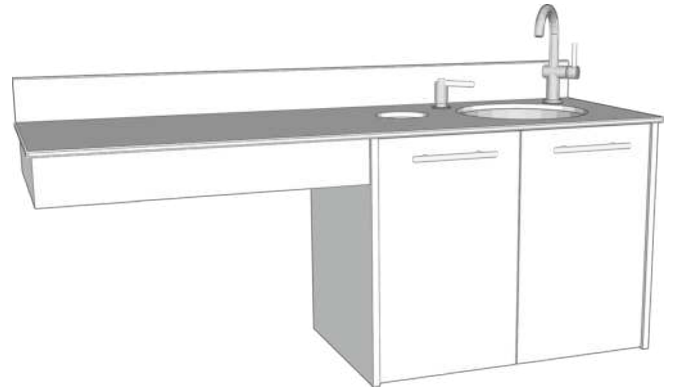
Height: 32.5"

Depth: 19.2"

For all dimensions please see the respective installation guide

Standard Features Includes:

- ❑ Modern floating style console
- ❑ Installed flush to wall
- ❑ Knee space
- ❑ Premium embossed laminate fronts and doors
- ❑ Designer solid surface work surface



All Anthos Perfetta and Anthos Linea Dental Cabinet Systems
are available to the Patterson design team in
2D version for floor planning necessities
AND
3D version for digital walk through presentations



ANTHOS LINEA CENTER TREATMENT CONSOLE

Vendor Item #: ALCTC B5A-000-000
PDCP SAP #: 101707813
Description: Anthos Linea Central Treatment Console
MSRP: \$25,195

Console Dimensions:

Width: 24.0"
Height: 87.4"
Depth: 113.6"

For all dimensions please see the respective installation guide

Standard Features Includes:

- ❑ Structural steel powder coated base with built in levelers
- ❑ Installed free-standing
- ❑ Soft close drawers
- ❑ Soft close concealed hinge doors
- ❑ Premium embossed laminate fronts and doors
- ❑ Designer solid surface work surface
- ❑ Fully chaised for equipment integration
- ❑ Undermount stainless steel sink with faucet and soap dispenser
- ❑ Above sink dispensing for gloves and towels
- ❑ X-Ray Pass-through consoles with hi-grade bi-fold doors



All Anthos Perfetta and Anthos Linea Dental Cabinet Systems
are available to the Patterson design team in
2D version for floor planning necessities
AND
3D version for digital walk through presentations



ANTHOS LINEA CENTER TREATMENT CONSOLE

Vendor Item #: ALCTC B5C-000-000
PDCP SAP #: 101707814
Description: Anthos Linea T-Wall Treatment Center

MSRP: \$7,870

Console Dimensions:

Width: 24.0"

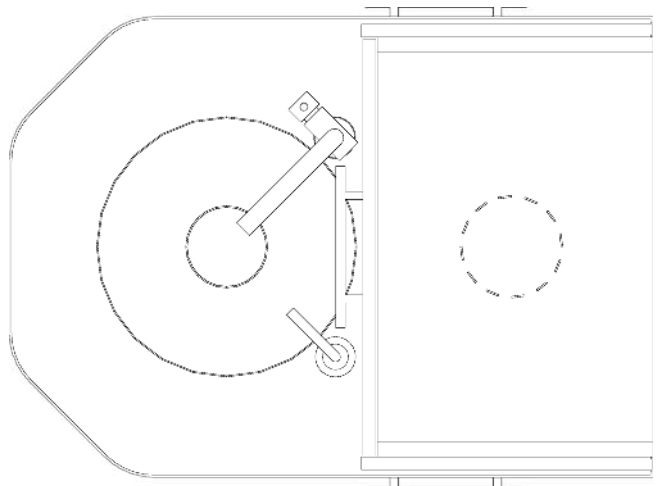
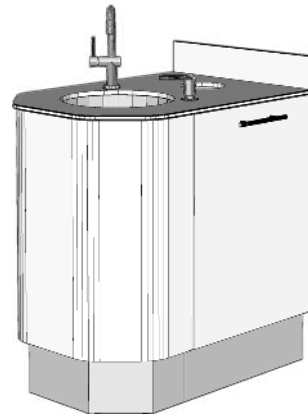
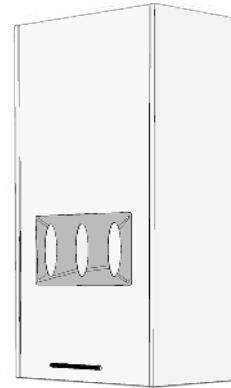
Height: 87.4"

Depth: 32.2"

For all dimensions please see the respective installation guide

Standard Features Includes:

- ❑ Structural steel powder coated base with built in levelers
- ❑ Installed flush mount to wall
- ❑ Soft close concealed hinge doors
- ❑ Premium embossed laminate fronts and doors
- ❑ Designer solid surface work surface
- ❑ Undermount stainless steel sink with faucet and soap dispenser
- ❑ Above sink dispensing for gloves and towels



All Anthos Perfetta and Anthos Linea Dental Cabinet Systems
are available to the Patterson design team in
2D version for floor planning necessities
AND
3D version for digital walk through presentations



ANTHOS LINEA CENTER TREATMENT CONSOLE

Vendor Item #: ALCTC B5E-000-000

PDCP SAP #: 101707815

Description: Anthos Linea Wall Insert for
Passthrough X-ray

MSRP: \$7,605

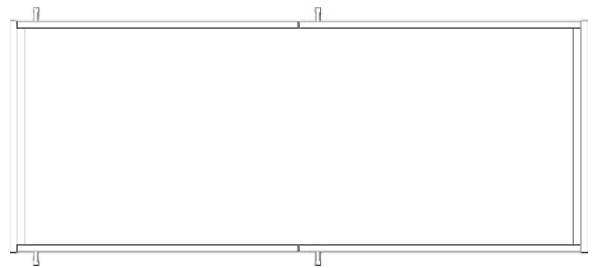
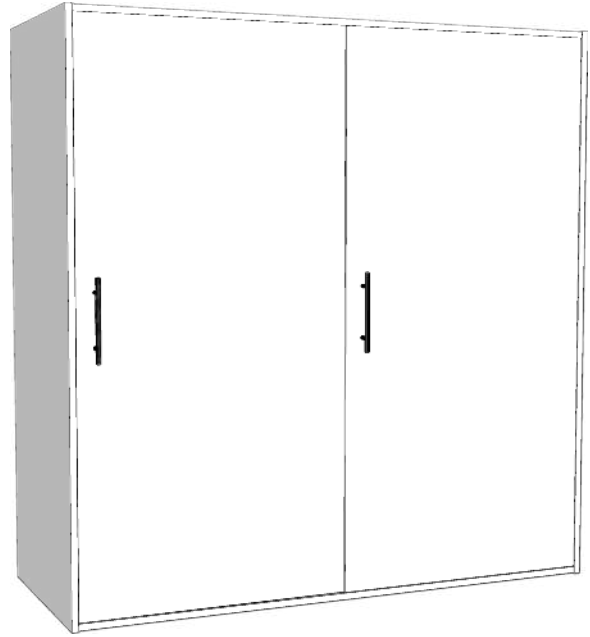
Console Dimensions:

Width: 55.5"

Height: 55.5"

Depth: 22.0"

For all dimensions please see the respective installation guide



All Anthos Perfetta and Anthos Linea Dental Cabinet Systems
are available to the Patterson design team in
2D version for floor planning necessities
AND
3D version for digital walk through presentations



ANTHOS LINEA STERILIZATION CENTER

Vendor Item #: ALSTR-06A-000-000
PDCP SAP #: 101707816
Description: Anthos Linea 8' Sterilization Center

MSRP: \$20,995

Console Dimensions:

Width: 98.1"

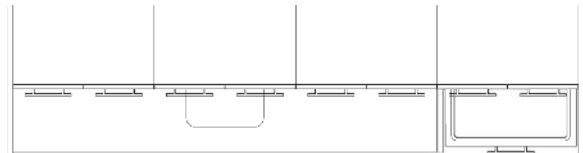
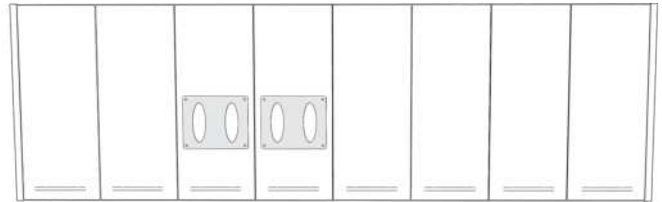
Height: 90.0"

Depth: 24.9"

For all dimensions please see the respective installation guide

Standard Features Includes:

- ✘ Structural steel powder coated base with levelers
- ✘ Decorative brushed nickel bar pulls
- ✘ Soft close steel drawers
- ✘ Soft close concealed hinge doors
- ✘ Designer solid surface counter tops
- ✘ Undermount stainless steel sink with faucet
- ✘ Premium embossed laminate fronts and accents
- ✘ Dispensing for gloves and towels from upper cabinet
- ✘ Dual pull out solid surface autoclave shelves



All Anthos Perfetta and Anthos Linea Dental Cabinet Systems
are available to the Patterson design team in
2D version for floor planning necessities
AND
3D version for digital walk through presentations



ANTHOS LINEA STERILIZATION CENTER

Vendor Item #: ALSTR 06B-000-000
PDCP SAP #: 101707817
Description: Anthos Linea 10' Sterilization Center

MSRP: \$23,095

Console Dimensions:

Width: 122.1"

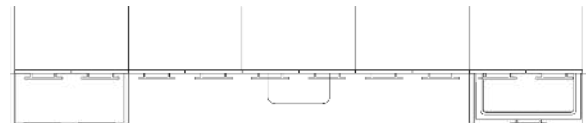
Height: 90.0"

Depth: 24.9"

For all dimensions please see the respective installation guide

Standard Features Includes:

- ❑ Structural steel powder coated base with levelers
- ❑ Decorative brushed nickel bar pulls
- ❑ Soft close steel drawers
- ❑ Soft close concealed hinge doors
- ❑ One inch thick designer solid surface counter tops
- ❑ Undermount stainless steel sink with faucet
- ❑ Premium embossed laminate fronts and accents
- ❑ Dispensing for gloves and towels from upper cabinet
- ❑ Dual through counter waste locations with work shelf
- ❑ Dual pull out solid surface autoclave shelves



All Anthos Perfetta and Anthos Linea Dental Cabinet Systems
are available to the Patterson design team in
2D version for floor planning necessities
AND
3D version for digital walk through presentations



ANTHOS LINEA STERILIZATION CENTER

Vendor Item #: ALSTR 06D-000-000
PDCP SAP #: 101707818
Description: Anthos Linea 12' Sterilization Center

MSRP: \$29,395

Console Dimensions:

Width: 146.1"

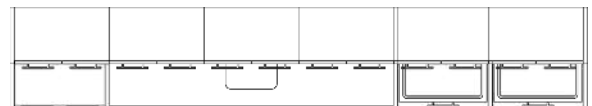
Height: 90.0"

Depth: 24.9"

For all dimensions please see the respective installation guide

Standard Features Includes:

- ✘ Structural steel powder coated base with levelers
- ✘ Decorative brushed nickel bar pulls
- ✘ Soft close steel drawers
- ✘ Soft close concealed hinge doors
- ✘ One inch thick designer solid surface counter tops
- ✘ Undermount stainless steel sink with faucet
- ✘ Premium embossed laminate fronts and accents
- ✘ Dispensing for gloves and towels from upper cabinet
- ✘ Dual through counter waste locations with work shelf
- ✘ Quad pull out solid surface autoclave shelves

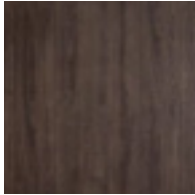


All Anthos Perfetta and Anthos Linea Dental Cabinet Systems
are available to the Patterson design team in
2D version for floor planning necessities
AND
3D version for digital walk through presentations

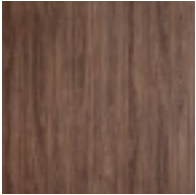


BASE OPTIONS

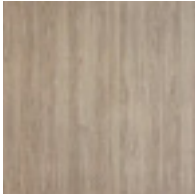
Textured



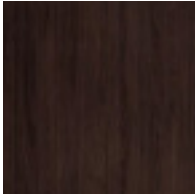
Evening Notte
L30



Natural Marrone
L29



Jasper
L34



Seppia Walnut
L40



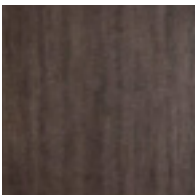
Serotina
L33



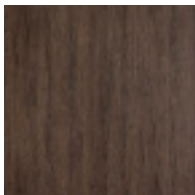
Kirsche
L35



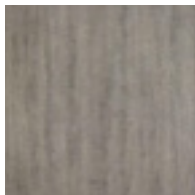
White Nebbia
L31



Laurel
L37



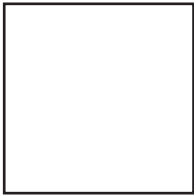
Allaria
L36



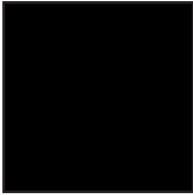
Coastal
L38

Printed image will vary from actual product physical samples are available from your Anthos rep

Non-Textured



White
664



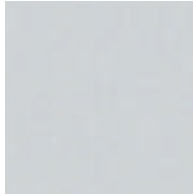
Black
174



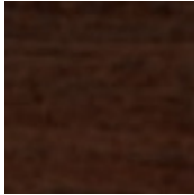
Silver
N99



Slate Grey
129



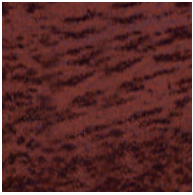
Fashion Grey
227



Walnut
537



Fusion Maple
560



Empire Mahogany
531



Wild Cherry
567



Designer White
388
*hi-gloss



Mystic Grey
L46

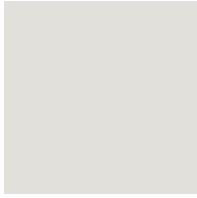
Printed image will vary from actual product physical samples are available from your Anthos rep



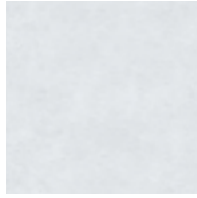
WORKSURFACE OPTIONS



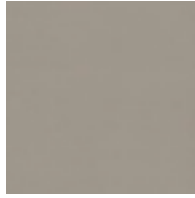
Designer White
354



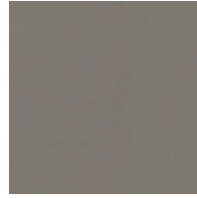
Relaxed White
924



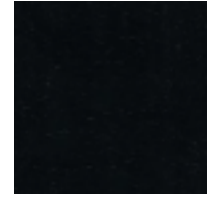
Powder White
920



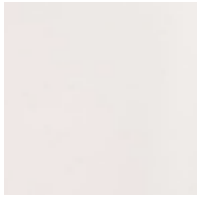
Metro Concrete
929



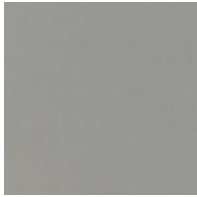
Mink Concrete
928



Black Onyx Mirage
909



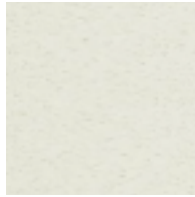
Milk Glass Spectra
907



Zen Grey
911



Yukon Riverstone
919



Chilled Earth
922



Beige Travertine*
926



Angel Falls*
923

Printed image will vary from actual product Physical samples are available from your Anthos rep
*Additional charges will apply



TERMS AND CONDITIONS

TERMS

NOVA Solutions' (NOVA) standard terms are net 45 days from Patterson Dental with approved credit. All prices are in U.S. Dollars. Prices herein are list prices effective with the date printed on the cover and supersede all other published price lists. NOVA reserves the right to change prices without prior notice.

SELLING INFORMATION

Distribution of this price list does not in itself constitute an offer to sell. Offers can be received only from authorized NOVA dealers.

PRICES

All prices listed are suggested retail prices, FOB point of shipment, freight allowed (included in list prices) when shipping within the continental United States. Orders are accepted subject to prices and taxes prevailing at the time of shipment. Prices and taxes are subject to change without notice. If shipping date requested is more than 90 days from date of order, NOVA shall have the right to use the published list prices effective at time of shipment.

ORDER PLACEMENT

NOVA requires that all orders be in writing and accompanied by a layout/drawing. This is to ensure that orders are complete, avoid errors, and avoid duplication. Please order products by model numbers specified to avoid any possible error. Telephone orders will not be processed for production without proper written confirmation. NOVA cannot be held responsible for errors, omissions, and order duplication due to non-compliance with this procedure.

ORDERING INFORMATION

Mail, fax or e-mail all orders to:

NOVA Solutions, Inc.
421 Industrial Avenue
P.O. Box 725
Effingham, Illinois 62401
Phone: 217-342-7070
Phone: 800-730-6682
Fax: 217-342-7006
Fax: 800-940-6682
E-mail: orders@novasolutionsinc.com

For prompt delivery, all orders must include:

- 1) Purchase order number
- 2) Attached layout/drawing
- 3) Billing address
- 4) Ship-to information and e-mail address
- 5) Special handling instructions
- 6) Complete model and finish number
- 7) Correct pricing
- 8) CPU / Monitor Dimensions (Where Applicable)

ORDER ACKNOWLEDGMENT

Please notify NOVA immediately of any discrepancies in your order acknowledgement. The customer assumes all responsibility for order accuracy. NOVA does not assume responsibility for errors caused by miscommunications from the customer. Orders are accepted only by issuance of NOVA's formal acknowledgement. Orders are subject to the terms and conditions set forth herein, notwithstanding any variance in terms and conditions set forth on buyer's order forms.

The order acknowledgement is the final confirmation of the agreement between the customer and NOVA and supersedes all prior oral and written statements regarding the order. Once the order confirmation has been sent, only NOVA approved and signed modifications will supersede the original confirmation.

QUOTATIONS

Quotations are valid for a period of thirty (30) days.

CHANGES

NOVA reserves the right to make changes in design, specifications, construction, pricing or to discontinue products without prior notice. Weights and Dimensions are approximate and are within normal industry standards.

ORDER CHANGES

Upon acknowledgement of an order, NOVA may not be able to accept a change order. NOVA will not accept changes on specials or custom items once production begins. Every attempt to make the requested change will be made and the following conditions apply:

- 1) Requested changes must be submitted in writing
- 2) Additional charges for materials, labor, and administrative costs may be charged
- 3) Completion dates may be rescheduled as required based on changes

ORDER CANCELLATIONS

Order cancellations must be requested in writing no later than 48 hours after receipt of original order and are subject to approval of NOVA Solutions, Inc. Cancellations cannot be accepted otherwise.

STORAGE

Orders in which shipment is delayed by the customer beyond 30 days after acknowledged shipping date are subject to a 3% weekly storage fee. Such transfer to storage will be deemed delivery to purchaser for all purposes including invoicing and payment. Customer must provide notification of "shipment delay" at least two weeks prior to the originally scheduled ship date.

SHIPPING INFORMATION

Freight

All shipments are Free On Board (FOB) point of shipment, freight prepaid and allowed (included in list prices) when shipping within the continental United States. Please contact Customer Support for shipments to Alaska, Hawaii, and international. NOVA reserves the right to select the most appropriate carrier and routing on all shipments.

All shipments are to be coordinated & paid for by Patterson Dental, and to be picked up for delivery at Nova Solutions Inc. at 421 Industrial Ave. Effingham, IL 62401.

NOVA's product pricing is dock delivered, based on standard delivery between normal business hours Monday through Friday, excluding weekends and holidays. Any charge arising from failure to accept a shipment, rerouting while in transit, or carrier storage charges are not included in prices shown and will be billed to "Sold To" account number on the order. Detention charges will be incurred for untimely off-loading of product or other time delays incurred.



TERMS AND CONDITIONS

LOSS, DAMAGE OR DELAY

NOVA shall not be liable for loss, damage, or delay resulting from causes beyond its reasonable control, including but not limited to fire, strike, inclement weather, accidents, or delay in transportation. In the event of a delay, due to any such cause, the delivery date will be postponed.

SHORTAGES

If the shipment is not delivered in accordance with the quantity of cartons and packages shown on the Bill of Lading and/or Freight Bill, do not accept it until such shortages are noted on both documents.

FREIGHT CLAIMS

The merchandise is carefully packed and thoroughly inspected before shipment. The carrier upon acceptance of the shipment assumes responsibility for its safe delivery.

Signing the Bill of Lading as "Subject to Inspection" does not make the carrier liable for damage.

CONCEALED LOSS OR DAMAGE

Concealed loss or damage means loss or damage that does not become apparent until the merchandise has been unpacked. The contents may be damaged in transit due to rough handling even though the carton may not show external damage. When damage is discovered upon unpacking, take pictures immediately and notify NOVA within 7 calendar days of the delivery date. NOVA will contact the carrier to initiate a claim.

VISIBLE DAMAGE OR SHORTAGE

Any external evidence of damage or shortage must be noted on the freight bill or express receipts and signed by the carrier's agent. Failure to adequately describe such external evidence of damage or shortage may result in the carrier refusing to honor a damage claim. Take pictures of the damaged product and contact NOVA immediately to file a claim.

In the event of damage all cartons and packaging must be kept with the merchandise at the delivered location. Failure to do so constitutes acceptance and a waiver of any such claim.

5 YEAR LIMITED WARRANTY

NOVA Solutions warrants that its products are free from defects in materials and workmanship given normal use and care for the lifetime of service; proof of delivery being the only official document accepted by NOVA for any claim. In the event that a product is used more than normal use, the applicable warranty period may be reduced.

This warranty is made by NOVA Solutions to the original customer for as long as the original customer owns and uses the product. NOVA Solutions' warranty is only valid if the products are given normal and proper use, and installed in accordance with NOVA Solutions' installation and/or application guidelines, and installed by an authorized NOVA Solutions' dealer or agent. NOVA Solutions assumes no responsibility for repairs to products sustaining damages resulting from end-user modifications, attachments to a product, misuse, abuse, alteration, or negligence.

This warranty is subject to the limitations, exclusions, and other provisions provided below:

- Five years: Thermofused laminate
- Five years: Drawer slides
- Five years: Locks

As your manufacturer, NOVA Solutions stands behind our quality products and will do everything possible to resolve any problems that might arise within the terms of this warranty.

For more information, or to file a warranty claim, please contact NOVA Solutions' Customer Support at 800-730-6682.

GOVERNING LAWS

This contract shall be construed and governed in accordance with the laws and regulations of the state of Illinois.



ENVIROMENTAL ACCOUNTABILITY

NOVA Solutions takes our environmental accountability seriously with regards to our daily processes and products we produce. It is our corporate responsibility to our employees, customers, and community. We maintain the highest sensitivity and follow-through in preserving our natural resources today, and more importantly, for our future generations. We have chosen suppliers that share this same commitment. Particleboard, the foundation of our furniture design, is manufactured from 100% recycled postindustrial materials. We ensure it is low formaldehyde emission particleboard, use water-based adhesives that are non-toxic in lamination, and band any exposed edges to seal the substrate. To reduce materials in landfill sites, we integrate remaining cuttings into smaller products or packaging material. Our sawdust is recycled for use on local farms. We use recycled cardboard in all our packaging. NOVA also recycles cardboard, paper, plastics, steel, and aluminum.

