



www.my-ray.com



BU Medical Equipment

Plant - Via Bicocca, 14/c - 40026 Imola - Bo (Italy) tel. +39 0542 653441 - fax +39 0542 653555

Headquarters - Cefla s.c. Via Selice Provinciale, 23/a - 40026 Imola - Bo (Italy) tel. +39 0542 653111 - fax +39 0542 653344

Cefla North America, Inc. 6125 Harris Technology Blvd. Charlotte, NC 28269 - U.S.A. Toll Free: (+1) 800.416.3078 Fax: (+1) 704.631.4609

Data subject to changes without prior notice. 04/2021 MCHDGB171500
According to the regulations in force, some products and/or features may have different availability and characteristics in areas outside of the European Union. Please contact your local distributor.



C-U2
Intraoral HD Camera



C-U2, just right for me!

Portable, simple, fast: high definition and technological reliability, as part of a miniature revolution. C-U2 becomes your new method of working, communicating, imagining. **Just right for you.**



FOCUS-FREE

It does not require manual adjustments, thanks to the wide 5 to 70 mm depth of field; images always in focus. Maximum simplicity, perfect images.

MULTIFUNCTION BUTTON WITH DYNAMIC ZOOM CONTROL

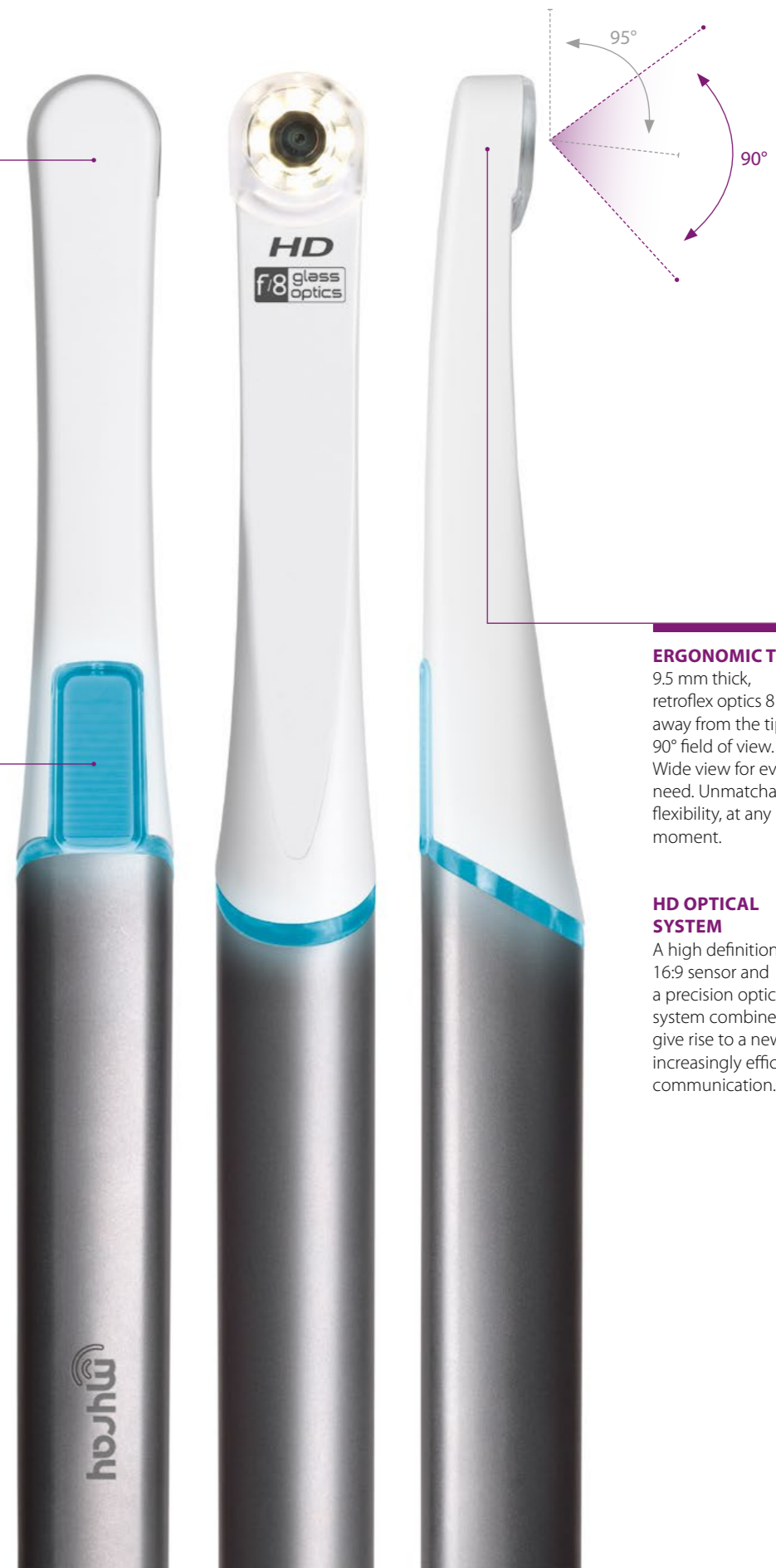
Image zoom, scroll and acquisition free from vibrations. The simplicity of a trackpad in just one button.

ERGONOMIC TIP

9.5 mm thick, retroflex optics 8 mm away from the tip, 90° field of view. Wide view for every need. Unmatchable flexibility, at any moment.

HD OPTICAL SYSTEM

A high definition 16:9 sensor and a precision optical system combine to give rise to a new, increasingly efficient communication.



Let's see.

Reality has never been so clear. High definition details and innovative design for maximum comfort. C-U2: the perfection of a complete high definition examination.

It shows the patient, in real time, images and footages for the sake of direct and effective communication. Precise, sharp and clear, only C-U2 offers you clear and contrasted images under all circumstances. It shows the aesthetic aspect of a smile or a single tooth with maximum high resolution. The best.

IMAGINE. Professional optical system and uniform field of view, distortion-free. Thanks to the F/8 lens aperture and the innovative HD sensor, you get homogeneous lights and natural colours. Under all circumstances.

MOVE. Multifunction button and automatic Focus-Free adjustments: view, browse, enlarge, save. The flexibility of a trackpad in just one button and automatic parameters for maximum comfort, with maximum results. The diffuse 360° back-lighting visualizes the state of the handpiece under any condition of use.

SHARE. Communication with the patient has never been so simple: view, share, inform. All in one click. Store and process images on the PC thanks to iRYS, the latest-generation MyRay software platform. View captured images on the iPad immediately and share your diagnoses with ease.

- HD sensor (16:9)
- 8 powerful LED's with optical diffuser
- Optical group with 7 high purity glass lenses, F/8
- 50x enlargement - 100x with Macro Cap*
- Direct Digital USB Technology



HD VISION

The new frontier of high definition. Yours. C-U2 is innovative because it offers very high quality images and is easy to use. Maximized field of view, 7 glass lenses, diffused illumination with 8 LED's and a last generation 16:9 sensor. Excellence at your service, at any moment. And to ensure you don't miss a single detail, application of the Macro Cap*, which incorporates another two glass lenses, instantly provides you with 100x magnification.



PLUG & PLAY

Digital video system incorporated in the handpiece for complete flexibility and perfect freeze-frames. The camera can be moved easily among various workstations. iCapture software features automatic switch on/off, live video feed and a freeze frame function. As simple as imagining.



FREE TO IMAGE

Perfect under all circumstances: thin tip (9.5 mm) with optics boasting a wide field of view (90°), partially retroflected for the sake of very comfortable intraoral investigations. Nimble and precise, with a distance of only 8 mm between the centre of the optics and the end of the handpiece.

The innovative multifunction button ensures maximum freedom and ease of use.



SECURE CONNECT

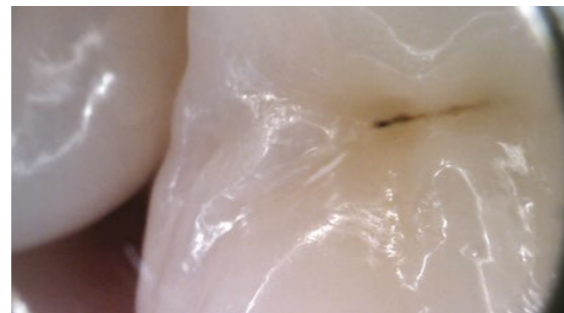
A connector reinforced with stainless steel and the flexible USB cable make the hand piece nimble and safe to use under all circumstances. C-U2 quickly connects to your laptop and is easy to use, thereby always offering you the best results in the shortest time possible. Full examinations, maximum reliability and flexibility, perfect results.

Full depth vision.

Exceptional depth of field simplifies multi-purpose usage of the camera, allowing users to frame a face or smile or zoom in on a single tooth; moreover, the Macro Cap allows magnification of up to 100x.

Easily applied or removed, the Macro Cap is an indispensable accessory for those who want to get the most from the ultra-high resolution of the C-U2. The cap acts as a light guide to optimise lighting of details located close to the optical unit, which incorporates 3 additional, high purity glass lenses. The macro images shown on the dental unit or PC display are extremely sharp.

- Depth of field 1-70 mm
- Magnifications of up to 100x
- Super HD detail



70 mm 5 mm Macro Cap -1 mm

Macro Cap not available for Canada and USA.

Technical specifications.

IMAGES	
Type	Intraoral, Extraoral, Macro (Video footage; Still image)
Focal depth	1-5 (Macro Cap); 5 - 70 mm
Visual angle	90° (diagonal)
Optical system	7 + 3 (Macro Cap) High purity glass lenses, F/8
Illumination	Homogeneous with 8 LED's with adjustable intensity
Frame rate	30 frame/sec.
Digital sensor	HD CMOS, Progressive Scan
Resolution	1280 x 720
Image format, video	16 : 9 Native
Enlargement (monitor 22")	100x (Macro Cap); 50x (Intraoral);
Maximum definition	10µm (Macro Cap); 20µm (Intraoral);
ERGONOMICS	
Size of distal section	9.5 mm (0.37 inches)
Length of hand piece	205 mm (8.07 inches)
Weight of hand piece	65 grams (2.3 ounce)
Retroreflection	Yes (95°)
Handle and connector	Stainless steel
CONNECTION	
Software	MyRay iRys for PC, iRys Mobile for iPad
Supported protocols	TWAIN, VDDS
Length of USB cable	1.8 m (16.40 feet); Can be extended to 5 m (16.40 feet) with USB-fed HUB
PC / MAC	Video and freeze frame (without driver)
Gates	USB 2.0 Hi-Speed and USB 3.0
USB foot pedal	For freeze-frame, saving (compatible)
Power source	5VDC - 500mA (USB)
SYSTEM'S MINIMUM REQUIREMENTS	
Operating system	Microsoft® Windows® 10 Professional 64 bit Apple® Mac OS X 10.5 Leopard*
Processor	1.0 GHz or higher
Memory	512 MB RAM
Display resolution	1280 x 720 at 32 bit true colour
Graphic card	DirectX 9.0 compatible

*video feed only

Macro Cap not available for Canada and USA.

